

Table of Contents

Important Safety Instructions	1	Handlebars and Footpegs	11
Safety Warning Labels and Serial Number	2	Arm Pivots	12
Reading the Serial Number	2	Shrouds and Vent Cover	13
Specifications	2	Crank Arms	15
Maintenance	3	Crank Covers and Connector Arms	16
Leveling/Moving the Machine	4	Fan Covers	19
Troubleshooting	5	Speed Sensor	21
Mechanical Procedures	6	Drive Belt	23
Fan Tension Adjustment	6	Belt Tensioner Assembly (Idler Assembly)	25
Belt Tension Adjustment	7	Fan Assembly and Fan Tensioner Assembly	27
Electronics Procedures	8	Drive Pulley, Pulley Shaft and Crank Bearing	29
Service Mode	8	Maintenance Parts Exploded View	31
Part Replacement	9		
Pedals	9		
Console	10		

Nautilus, Inc., (800) NAUTILUS / (800) 628-8458, www.NautilusInc.com - Customer Service: North America (800) 605-3369, outside U.S. +01-360-859-5180 | Printed in USA | © 2012 Nautilus, Inc., All rights reserved. ™ and ® indicate a trademark or registered trademark. Nautilus, Inc. (www.nautilus.com) trademarks include NAUTILUS®, BOWFLEX®, SCHWINN® and UNIVERSAL® and respective logos. Other trademarks are the property of their respective owners.

Important Safety Instructions



This icon means a potentially hazardous situation which, if not avoided, could result in death or serious injury. Read and understand all Warnings on this machine.

Before servicing or using this equipment, obey the following warnings:



Read and understand the Service Manual before working on the machine. Failure to obey the instructions and safety warnings could cause injury to the service technician or bystanders.

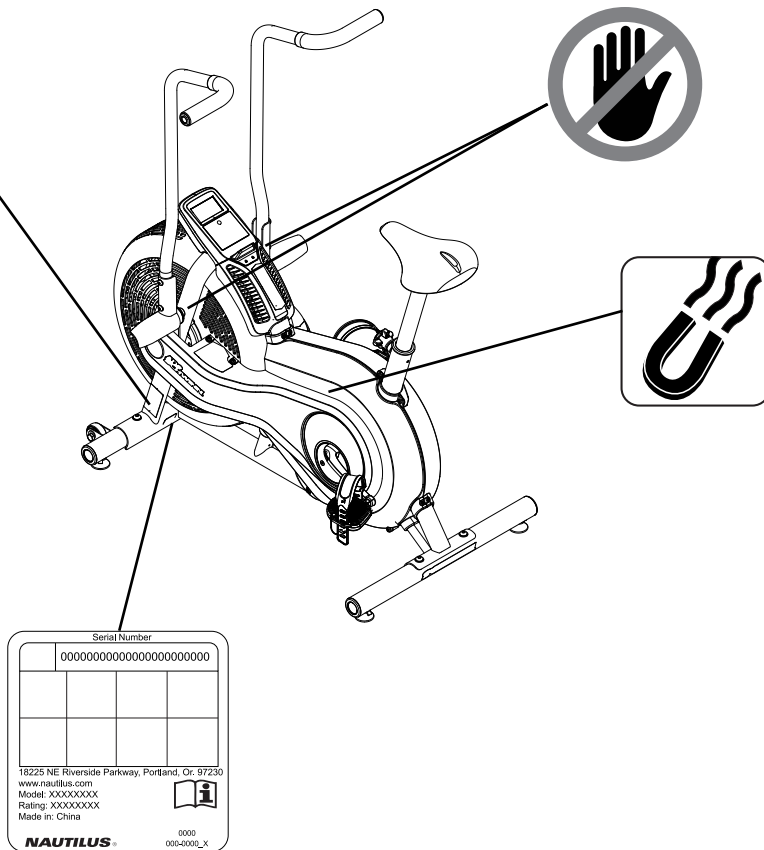


DANGER

Disconnect all power and allow to sit for 5 minutes before you service this machine.

- Keep bystanders and children away from the product being serviced at all times.
- Make sure that the repair is done in an appropriate work space away from foot traffic and exposure to bystanders.
- Some components of the equipment can be heavy or awkward. Enlist the service of a second person when you do maintenance steps involving these components. Do not try to do heavy or awkward steps on your own.
- Use only replacement parts and hardware that are supplied or approved by Nautilus. Failure to use Nautilus-approved replacement parts can adversely affect the safety and functionality of the equipment creating a risk to users.
- Be sure that all warning stickers and instructional placards applied to the product stay present and in good condition when doing maintenance or replacing components. If necessary, request replacement warning stickers or placards from Nautilus customer service.
- Do not try to change the design or functionality of the machine being serviced as this can adversely effect user safety.
- Do not put the machine back in service until all shrouds, instructions, warning labels and correct functionality have been verified and tested for correct performance.
- This product contains magnets. Magnetic fields can interfere with the normal use of certain medical devices at a close range. Users may come into proximity of the magnets in the assembly, maintenance, and/or use of the product. Given the obvious importance of these devices, such as a pacemaker, it is important that you consult with your medical provider in connection with the use of this equipment. Please consult the "Safety Warning Labels and Serial Number" section to determine the location of the magnets on this product.

Safety Warning Labels and Serial Numbers



Reading the Serial Number

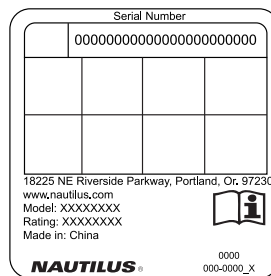
The instructions below show how to decode the information contained on the serial number.

SERIAL NO. FORMAT (Crank '09 bikes)

EVB - NLS Vendor code

YYWK - year/week

9999 - Machine made that production run



Specifications

Maximum User Weight	250 lbs. (113 kg)
Power Requirements	2 AA batteries (LR6)
Operational Voltage	1.0 - 3.3VDC



This product, its packaging, and components contain chemicals known to the State of California to cause cancer, birth defects, or reproductive harm. This Notice is provided in accordance with California's Proposition 65. If you would like additional information, please refer to our Web site at www.nautilus.com/prop65.

Maintenance

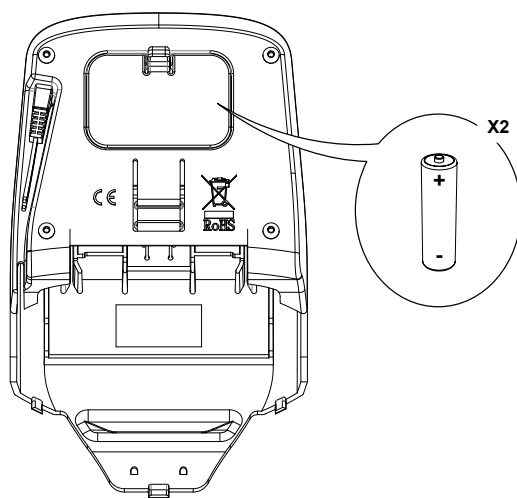
Read all maintenance instructions fully before you start any repair work. In some conditions, an assistant is necessary to do the necessary tasks.

- ⚠** Equipment must be regularly examined for damage and repairs. The owner is responsible to make sure that regular maintenance is done. Worn or damaged components must be replaced immediately or the equipment removed from service until the repair is made. Only manufacturer supplied components can be used to maintain and repair the equipment.

Daily	Before each use, examine the exercise machine for loose, broken, damaged, or worn parts. Do not use if found in this condition. Repair or replace all parts at the first sign of wear or damage. After each workout, use a damp cloth to wipe your machine and Console free of sweat. Note: Avoid excessive moisture on the Console.
Weekly	Clean the machine to remove any dust, dirt, or grime from the surfaces. If needed, sparingly apply a thin coating of silicone lube to ease operation. Note: Do not use petroleum based products.
Monthly	Check pedals, crank arms and handlebars, and tighten as necessary. Make sure all bolts and screws are tight. Tighten as necessary.

NOTICE: Do not clean with a petroleum based solvent or an automotive cleaner. Be sure to keep the Console free of moisture.

Replacing the Console Batteries



The Console display will show “Batt” during power up if the battery level is low. When replacing the batteries, make sure the batteries point in the +/– direction shown in the battery bay.

Note: The console uses AA size batteries (LR6).

- ⚠** Do not mix old and new batteries.
Do not mix alkaline, standard (carbon-zinc), or rechargeable (Ni-Cd, Ni-MH, etc) batteries.

Be sure to remove the batteries to prevent corrosion damage if you are not going to use the machine for an extended period of time.

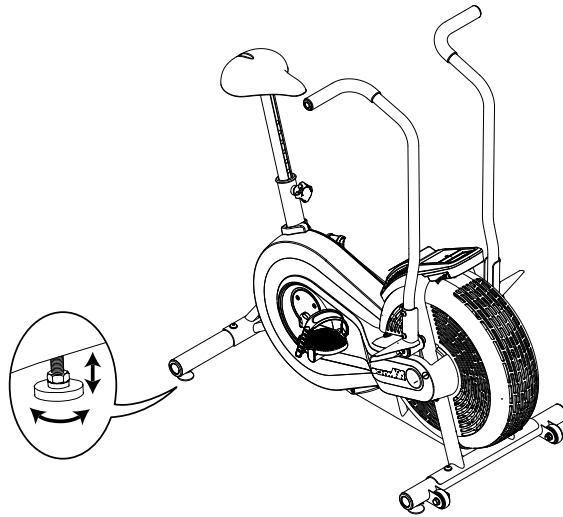
Leveling Your Machine

If your workout area is uneven, you must level your machine. To adjust:

1. Loosen the upper locking nut.
2. Turn the leveler to adjust the height.
3. Tighten the upper locking nut to lock the leveler.



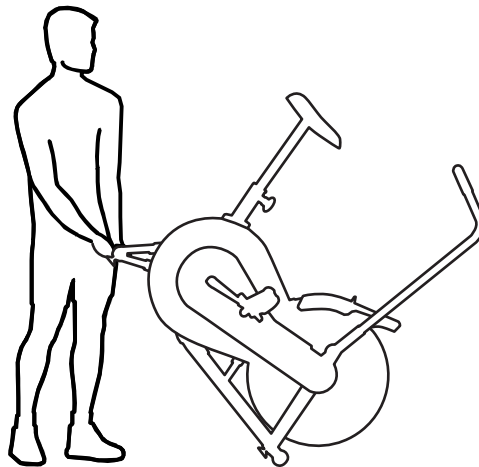
Do not adjust the levelers to such a height that they detach or unscrew from the machine. Injury to you or damage to the machine can occur.



Moving Your Machine

To move the machine, carefully lift the rear end of the machine and slowly push the machine to the desired location. Be sure to keep the fan assembly clear of the floor.

NOTICE: Be careful when you move the machine. Abrupt motions can affect the computer operation.



Troubleshooting

Condition/Problem	Things to Check	Solution
Console will not power up/turn on/start	Batteries	Make sure batteries are installed correctly. If batteries are correctly installed, replace with a set of new batteries.
	Check data cable integrity	All wires in cable should be intact. If any are visibly crimped or cut, replace cable.
	Check data cable connections/orientation	Make sure cable is connected securely and oriented properly. Small latch on connector should line up and snap into place.
	Check console display for damage	Check for visual sign that console display is cracked or otherwise damaged. Replace Console if damaged.
		If the above steps do not resolve the problem, contact Customer Care for further assistance.
Speed displayed is not accurate	Display set to wrong unit of measure. (English/Metric)	Change display units.
Speed displayed is always "0"/stuck in Pause mode	Data cable	Make sure the data cable is connected to the back of the Console and the main frame assembly.
No speed/RPM reading	Check data cable integrity	All wires in cable should be intact. If any are cut or crimped, replace cable.
	Check data cable connections/orientation	Be sure cable is connected securely and oriented properly. Small latch on connector should line up and snap into place.
	Check magnet position (requires shroud removal)	Magnet should be in place on pulley.
	Check RPM Sensor (requires shroud removal)	RPM sensor should be aligned with magnet and connected to data cable. Realign sensor if necessary. Replace if there is any damage to the sensor or the connecting wire.
Console shuts off (enters sleep mode) while in use	Check data cable integrity	All wires in the cable should be intact. If any are cut or crimped, replace cable.
	Check data cable connections/orientation	Be sure cable is connected securely and oriented properly. Small latch on connector should line up and snap into place.
	Check magnet position (requires shroud removal)	Magnet should be in place on pulley.
	Check RPM Sensor	Contact Customer Care for further assistance.
Unit rocks/does not sit level	Check leveler adjustment	Leveling feet may be turned in or out to level bike.
	Check surface under unit	Adjustment may not be able to compensate for extremely uneven surfaces. Move bike to level area.
Pedals loose/unit difficult to pedal	Check pedal to crank connection	Pedal should be tightened securely to crank. Be sure connection is not cross-threaded.
	Check crank to axle connection	Crank should be tightened securely to axle.
Clicking sound when pedaling	Check pedal to crank connection	Remove pedals and reattach fully.
Seat post movement	Check locking pin	Be sure adjustment pin is locked into one of the seat post adjustment holes.
	Check adjustment knob	Be sure knob is securely tightened.

Mechanical Service Procedures

Fan Tension Adjustmennt

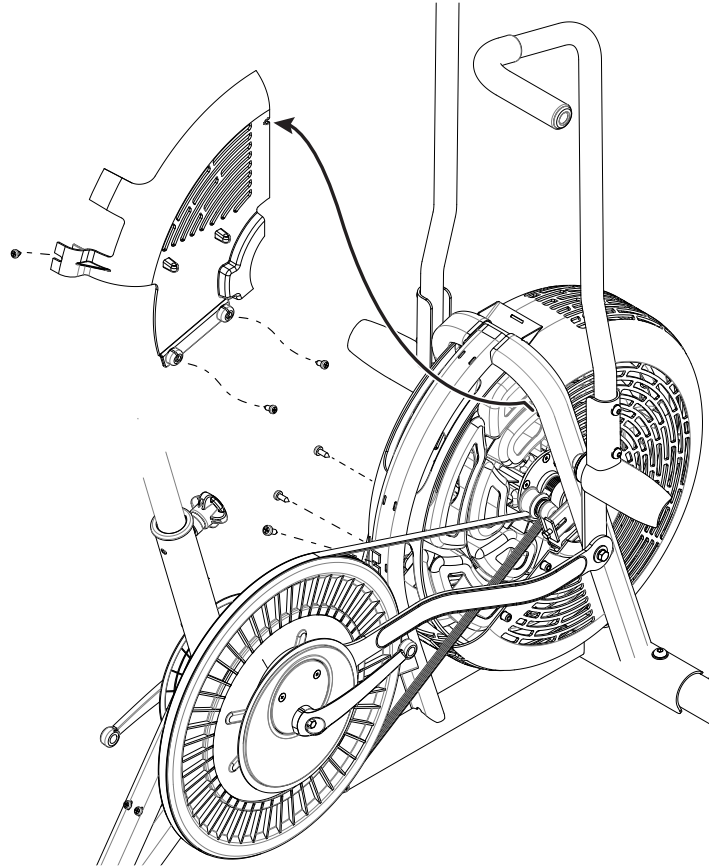


Disconnect the data cable from the console before you service this machine.

Note: Your machine may not match the image. For reference only.

Tools required: pedal wrench, #2 Phillips screwdriver, 11mm open end wrench or socket and wrench (or nutdriver)

1. Remove the Pedals. Refer to the “Replacing the Pedals” procedure in this manual.
2. Carefully remove the Shrouds, Console and Vent Cover. Refer to the “Replacing the Shrouds and Vent Cover” procedure in this manual. Set the hardware safely aside for reassembly.
3. Remove the Rear Fan Covers. Refer to the “Replacing the Fan Covers” procedure in this manual. Set the hardware safely aside for reassembly.



4. To tighten or loosen the tension, turn the adjustment bolt (A) on the back of each Fan Tensioner bracket (B).

NOTICE: Be sure to adjust the tension evenly on the two sides.

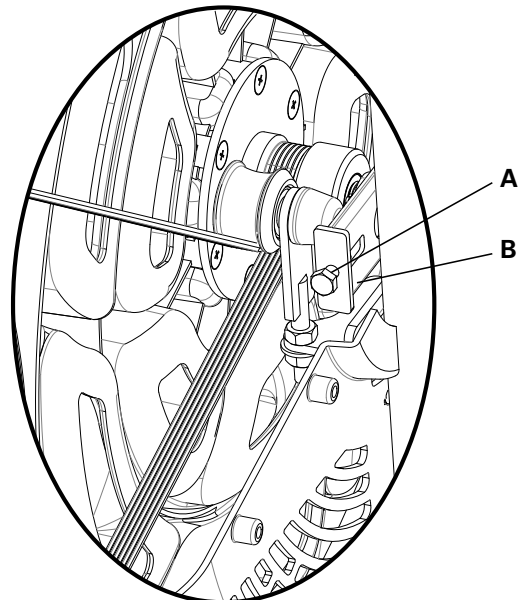
5. Before you reinstall the Fan Covers, make sure that the belt tension is correct. Refer to the “Belt Tension Adjustment” procedure in this manual.

6. Final Inspection

Inspect your machine to ensure that all hardware is tight and components are properly assembled.



Do not use until the machine has been fully assembled and inspected for correct performance in accordance with the Owner's Manual.



(Connector Arm not shown for clarity)

Belt Tension Adjustment



Disconnect the data cable from the console before you service this machine.

Note: Your machine may not match the image. For reference only.

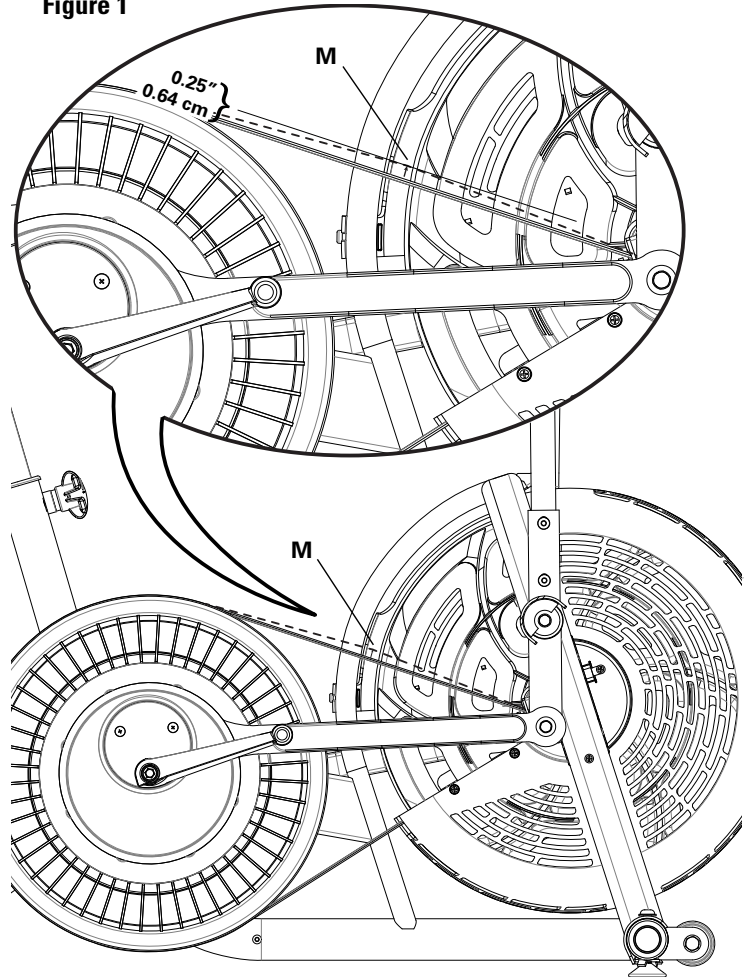
Tools required: pedal wrench, #2 Phillips screwdriver, M8 socket and wrench

1. Remove the Pedals. Refer to the “Replacing the Pedals” procedure in this manual.
2. Carefully remove the Shrouds, Console and Vent Cover. Refer to the “Replacing the Shrouds and Vent Cover” procedure in this manual. Set the hardware safely aside for reassembly.
3. Remove the Right Rear Fan Cover. Refer to the “Replacing the Fan Covers” procedure in this manual. Set the hardware safely aside for reassembly.

Note: It may also be necessary to remove the Front, Left Rear and Bottom Fan Covers.

4. To test the Drive Belt tension, pull the Drive Belt upward at the midpoint (M) between the pulleys and measure the distance. The Drive Belt should have only 0.25" (0.64 cm) of give. See Figure 1.

Figure 1



If the tension is too loose or too tight, adjust the Belt Tensioner (A):

5. To adjust the tension, turn the Upper Nut (B) and Lower Nut (C) on the Belt Tensioner (A). See Figure 2. The maximum belt tension is 450 N·m (331.9 lbf/ft).

Note: It may be necessary to remove the Front Fan Cover and Bottom Fan Cover.

6. Before you reinstall the Fan Covers, make sure that the belt tension is correct.

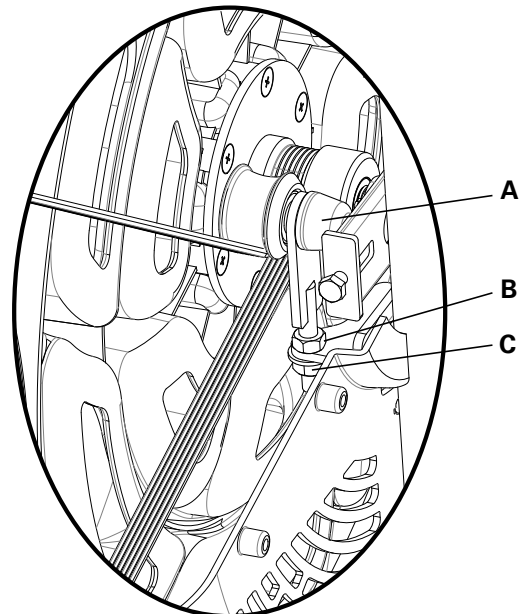
7. Final Inspection

Inspect your machine to ensure that all hardware is tight and components are properly assembled.



Do not use until the machine has been fully assembled and inspected for correct performance in accordance with the Owner's Manual.

Figure 2



(Connector Arm not shown for clarity)

Electronics Service Procedures

Service Mode

Service Mode lets you set the units of measure to either English or Metric, see machine statistics and firmware version (for technician use only).

1. When the Console is in Workout Mode or Pause Mode, push and hold down the button for 5 seconds to go into Service Mode.

Note: Tap the button to move through the Service Mode Menu options. When the Console display shows “dOnE”, push and hold the button for 3 seconds to reset the workout data and go back to Workout Mode.

2. The Console display shows the Units prompt. Push and hold the button to start Units option. Push the button to change between “LbS” (English units) and “SI” (metric units).
3. Push and hold the button for 3 seconds to set the units. The Console display shows the Units prompt.
4. Push the button to go to the Stats prompt. Push and hold the button to start the machine Stats option. The Console display shows Total Distance. Push the button to change between Total Distance and Total Time.

Note: The Total Distance value is a whole number of miles/km (no decimal point).

5. Push and hold the button for 3 seconds to go back to the Stats prompt.
6. Push the button to go to the Firmware Version prompt. Push and hold the button to see the firmware version of the Console.
7. Push and hold the button for 3 seconds to go back to the Firmware Version prompt.
8. Push the button to go to the exit option. The Console display shows “dOnE”.

To go back to Workout Mode, push and hold the button for 3 seconds. The workout data is reset.

To go through the Service Mode Menu again, tap the button. The Console display will show the Units prompt.

In Service Mode if the Console does not receive any input in approximately 5 minutes, it goes into Sleep Mode.

Replacing Parts



Disconnect the data cable from the console before cleaning, maintaining or repairing the machine.

For instructions to replace the following parts, please refer to the Assembly Manual for your bike:

- Seat
- Seat Post
- Front Stabilizer
- Rear Stabilizer

Replacing the Pedals



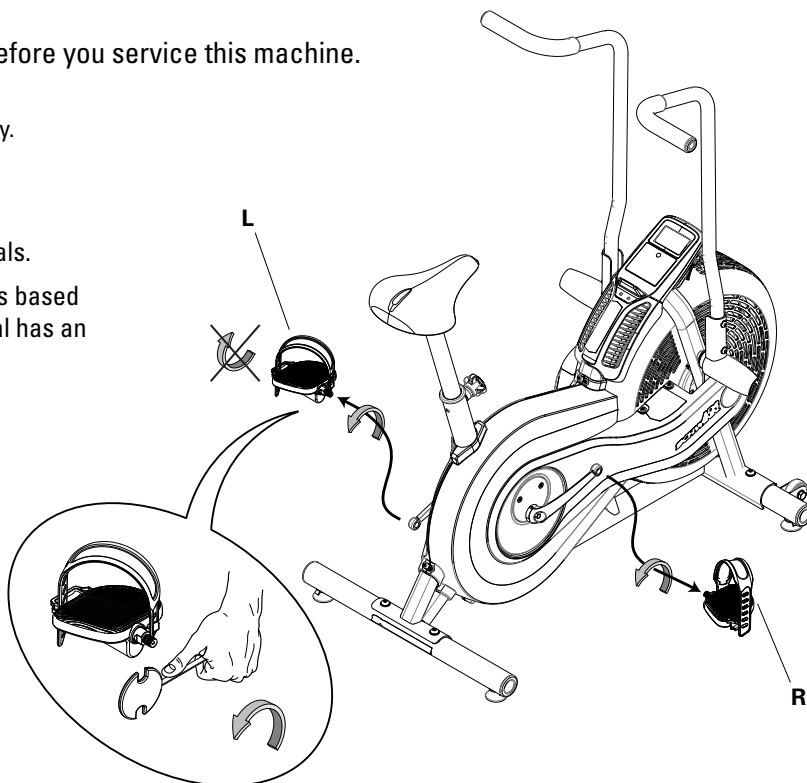
Disconnect the data cable from the console before you service this machine.

Note: Your machine may not match the image. For reference only.

Tools required: pedal wrench

1. Loosen and remove the old Pedals. Discard the old Pedals.

Note: The Left Pedal is reverse-threaded. Orientation is based from a seated position on the bike. The Left Pedal has an "L", the Right Pedal an "R".



2. Install the new Pedals. Carefully align the threads and hand tighten to prevent crossthreading. Then tighten fully with pedal wrench.

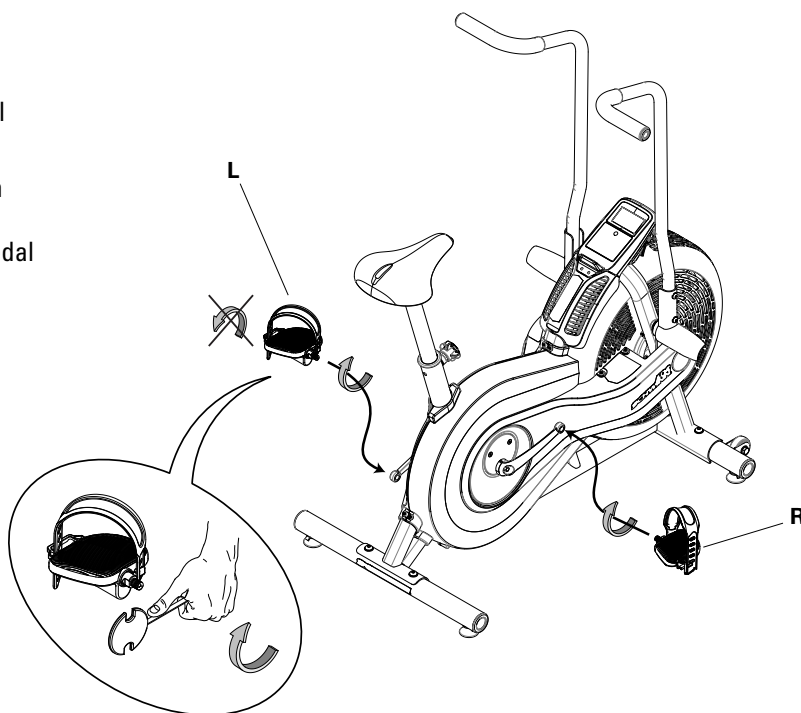
Note: The Left Pedal is reverse-threaded. Be sure to attach Pedals on the correct side of the Bike. Orientation is based from a seated position on the bike. The Left Pedal has an "L", the Right Pedal an "R".

3. Final Inspection

Inspect your machine to ensure that all hardware is tight and components are properly assembled.



Do not use until the machine has been fully assembled and inspected for correct performance in accordance with the Owner's Manual.



Replacing the Console

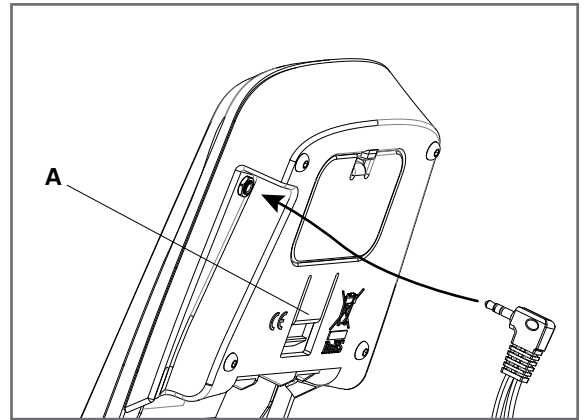


Disconnect the data cable from the console before you service this machine.

Note: Your machine may not match the image. For reference only.

1. Be sure the Data Cable is disconnected from the back of the Console. Push the Locking Tab (A) on the back of the Console to disengage it from the Console Bracket (B). Remove the Console from the Console Bracket. Discard the old Console.

NOTICE: Do not crimp the cable.



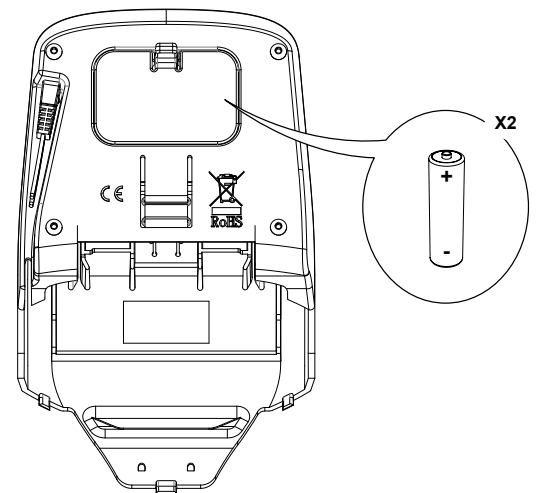
2. Install batteries in the replacement Console.

Note: The console uses AA size batteries (LR6), which are not included. Make sure that the batteries point in the direction of the +/– indicators in the battery bay.



Do not mix old and new batteries.

Do not mix alkaline, standard (carbon-zinc), or rechargeable (Ni-Cd, Ni-MH, etc) batteries.



3. Slide the replacement Console into position on the Console Bracket (B) and connect the Data Cable.

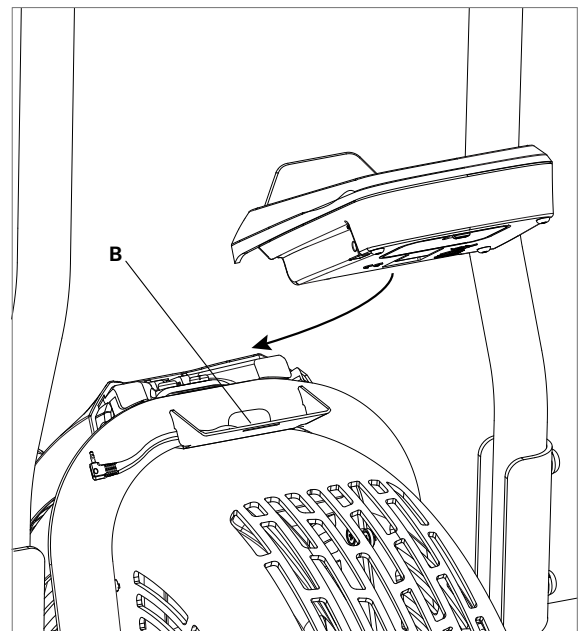
NOTICE: Do not crimp the cable.

4. Final Inspection


Inspect your machine to ensure that all hardware is tight and components are properly assembled.



Do not use until the machine has been fully assembled and inspected for correct performance in accordance with the Owner's Manual.




Replacing the Handlebars and Footpegs

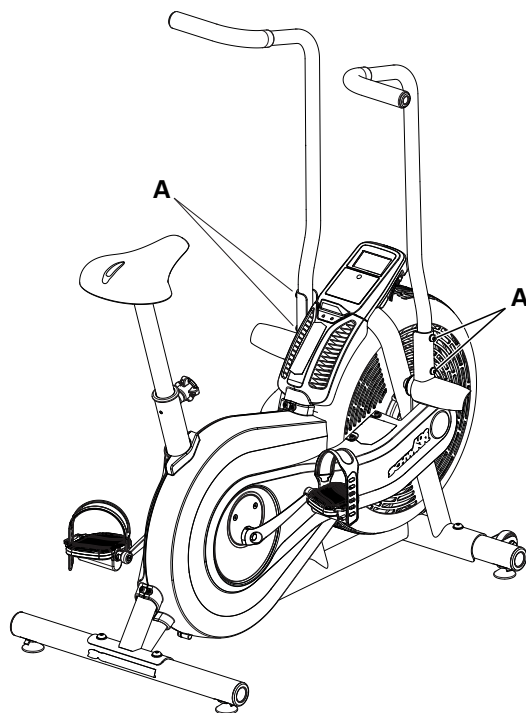
 Disconnect the data cable from the console before you service this machine.

Note: Your machine may not match the image. For reference only.

Tools required: 6 mm hex key

1. Loosen and remove the Hardware (A) that attaches the Footpeg and Handlebar to the Arm Pivot. Set the hardware safely aside for reassembly.

 To prevent possible serious injury, hold the Handlebar so that it does not fall.




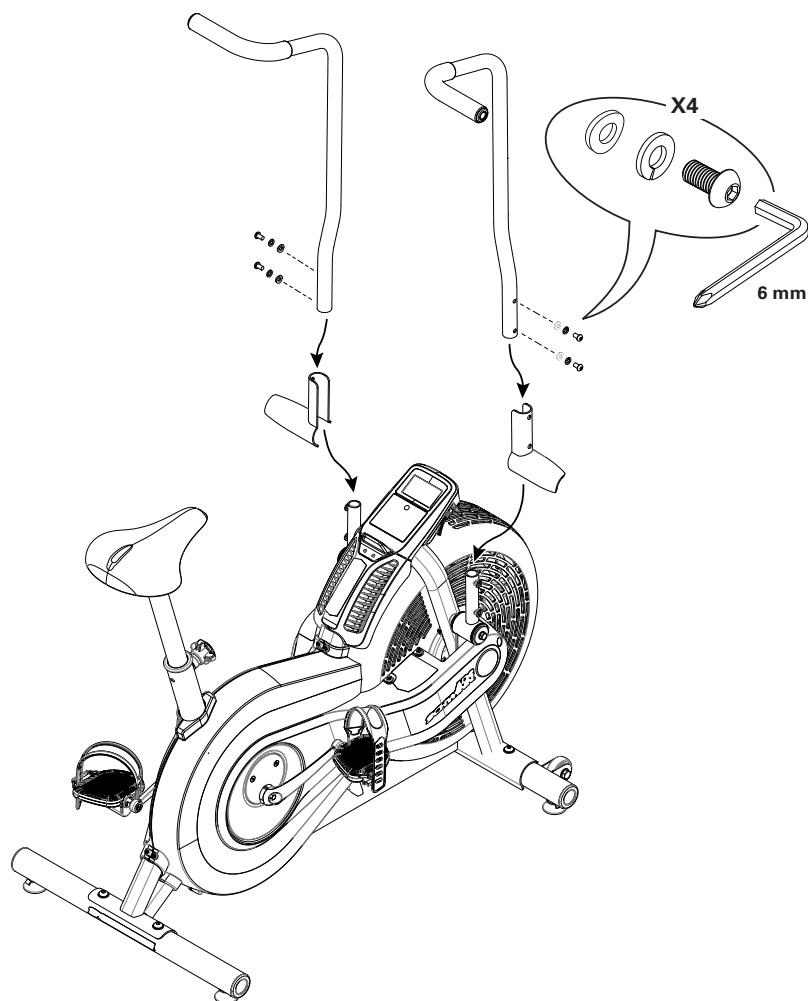
2. Remove the Handlebar and Footpeg. Discard the old part.

3. Installation is the reverse procedure.

4. Final Inspection

Inspect your machine to ensure that all hardware is tight and components are properly assembled.

 Do not use until the machine has been fully assembled and inspected for correct performance in accordance with the Owner's Manual.



Replacing the Arm Pivots

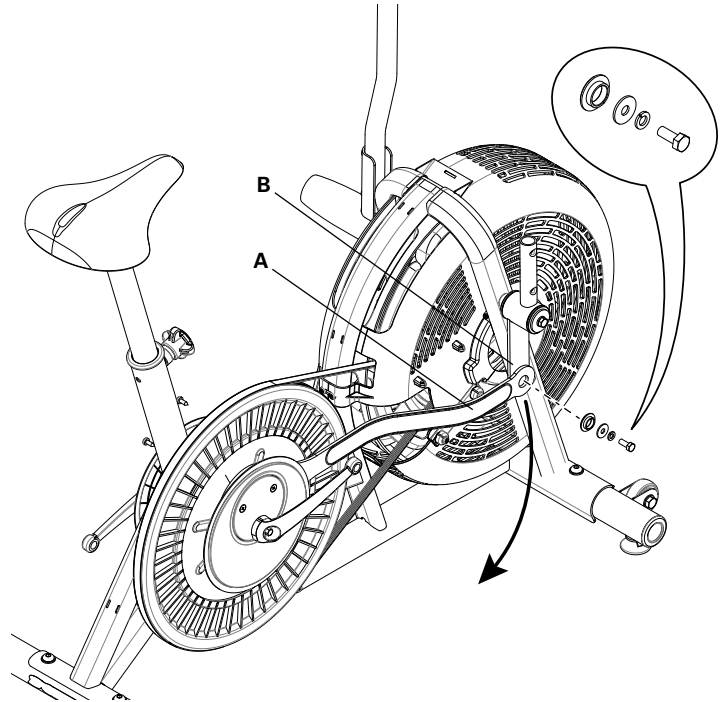


Disconnect the data cable from the console before you service this machine.

Note: Your machine may not match the image. For reference only.

Tools required: pedal wrench, 4mm hex key, #2 Phillips screwdriver, 13mm socket and wrench

1. Remove the Pedals. Refer to the “Replacing the Pedals” procedure in this manual.
2. Carefully remove the Shrouds. Refer to the “Replacing the Shrouds” procedure in this manual. Set the hardware safely aside for reassembly.
3. Remove the Handlebar and Footpeg. Refer to the “Replacing the Handlebars and Footpegs” procedure in this manual. Set the hardware safely aside for reassembly.
4. Loosen and remove the hardware that attaches the Connector Arm (A) to the Arm Pivot (B). Set the free end of the Connector Arm on the floor. Set the hardware safely aside for reassembly.



5. Loosen and remove the hardware that attaches the Arm Pivot (B). Remove the Arm Pivot. Set the hardware safely aside for reassembly.

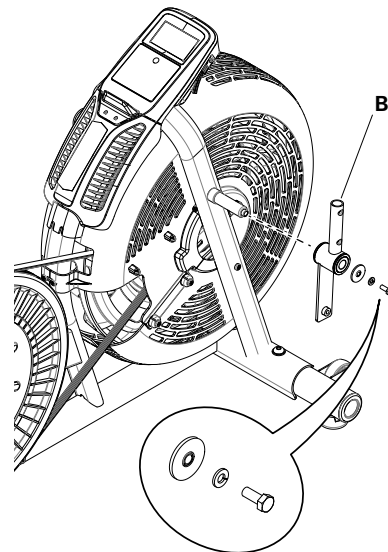
6. Installation is the reverse procedure.

7. Final Inspection

Inspect your machine to ensure that all hardware is tight and components are properly assembled.



Do not use until the machine has been fully assembled and inspected for correct performance in accordance with the Owner's Manual.



Replacing the Shrouds and Vent Cover



Disconnect the data cable from the console before you service this machine.

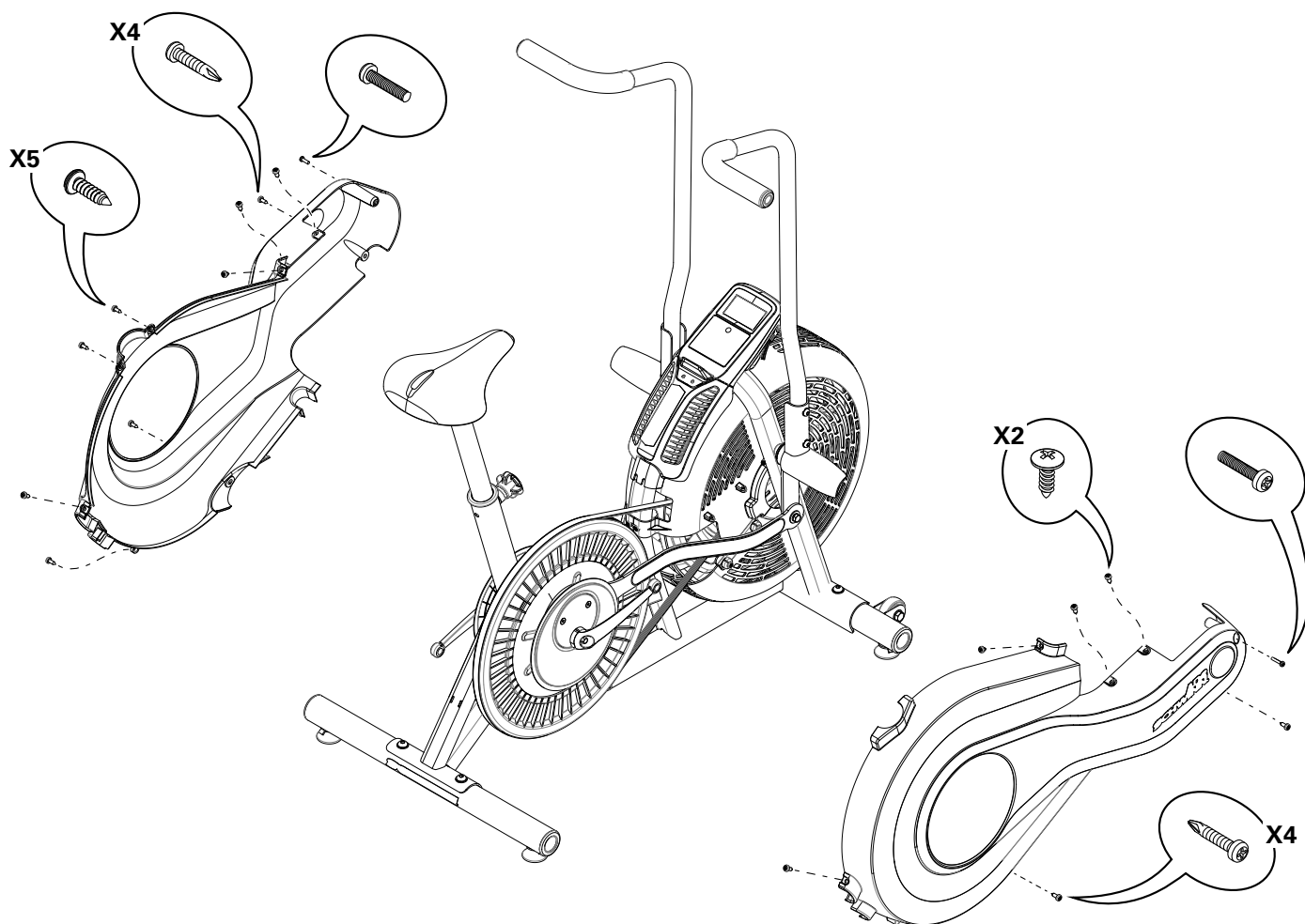
Note: Your machine may not match the image. For reference only.

Tools required: pedal wrench, #2 Phillips screwdriver

1. Remove the Pedals. Refer to the “Replacing the Pedals” procedure in this manual.

2. Using a #2 Phillips Screwdriver, remove the hardware that attaches the Left and Right Shrouds. Note the locations of the different types of screws. Slowly remove the Shrouds. Set the hardware safely aside for reassembly.

Note: To make removal of each Shroud easier, push the Handlebar on that side to the forward position.



3. Be sure the Data Cable is disconnected from the Console. Remove the Console and set it safely aside.

NOTICE: Do not crimp the cable.

4. Using a #2 Phillips Screwdriver, remove the hardware that attaches the Vent Cover and remove it. Set the hardware safely aside for reassembly.

Note: The hardware that attaches the bottom of the Vent Cover is removed during Shroud removal.

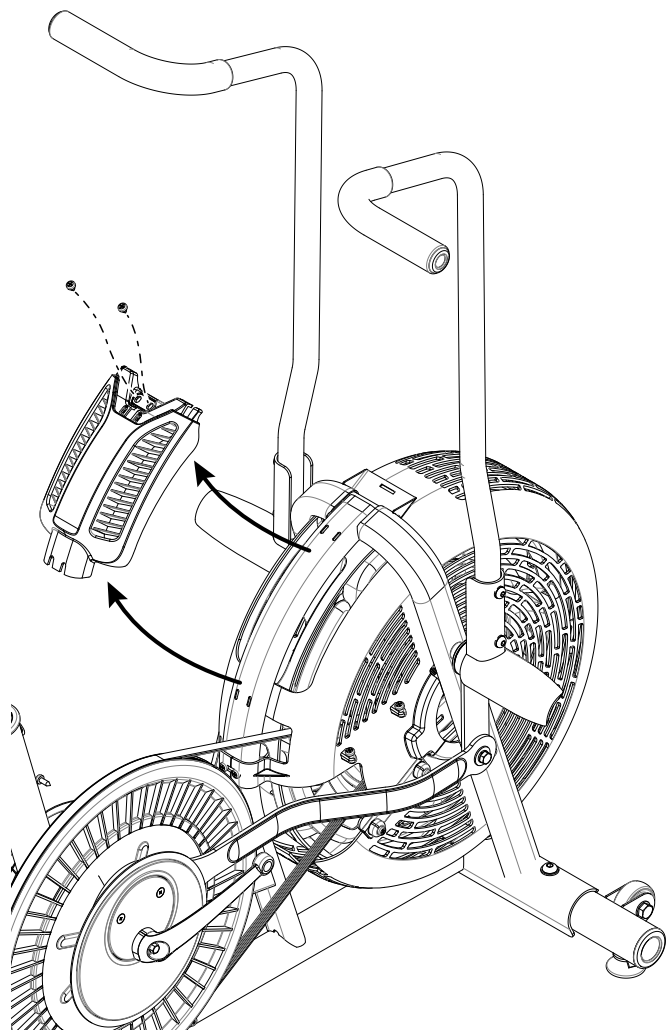
5. Installation is the reverse procedure.

6. Final Inspection

Inspect your machine to ensure that all hardware is tight and components are properly assembled.



Do not use until the machine has been fully assembled and inspected for correct performance in accordance with the Owner's Manual.



Replacing the Crank Arms



Disconnect the data cable from the console before you service this machine.

Note: Your machine may not match the image. For reference only.

Tools required: pedal wrench, 4mm hex key, #2 Phillips screwdriver, 13mm socket and wrench

1. Remove the Pedals. Refer to the “Replacing the Pedals” procedure in this manual.

2. Loosen and remove the Hardware (A1, A2) that attaches the Crank Arm (A) to the Crank Cover (B). Discard the old Crank Arm and hardware.

Note: Do not let the Star Washers (B1) on the Crank Cover fall down inside the Shroud.

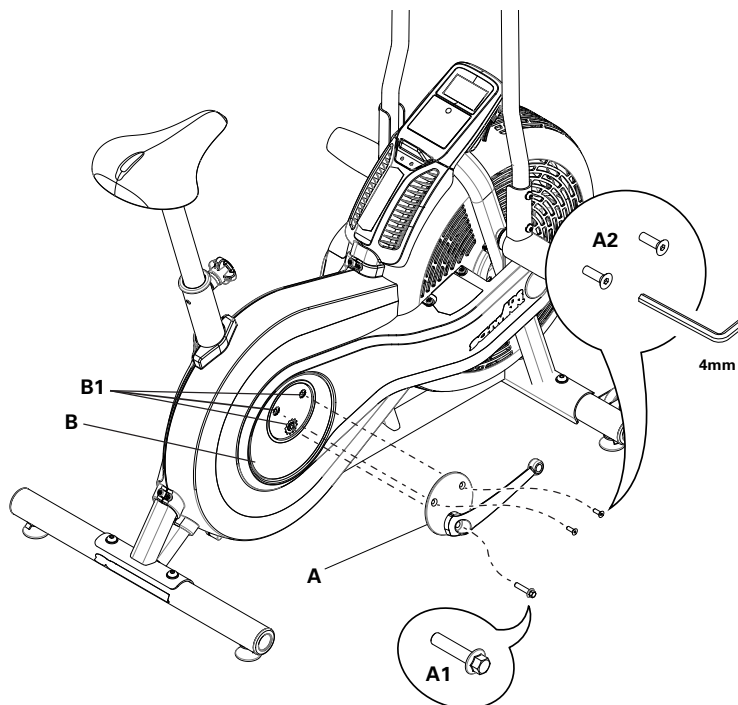
3. Installation is the reverse procedure.

4. Final Inspection

Inspect your machine to ensure that all hardware is tight and components are properly assembled.



Do not use until the machine has been fully assembled and inspected for correct performance in accordance with the Owner's Manual.



Replacing the Crank Covers and Connector Arms



Disconnect the data cable from the console before you service this machine.

Note: Your machine may not match the image. For reference only.

Tools required: #2 Phillips screwdriver, 13mm socket and wrench (or nutdriver), Spindle Removal Plate tool (plate, 2 hex head bolts and press-in spacer), 10mm socket and wrench

1. Remove the Pedals. Refer to the “Replacing the Pedals” procedure in this manual.

2. Carefully remove the Shrouds. Refer to the “Replacing the Shrouds” procedure in this manual. Set the hardware safely aside for reassembly.

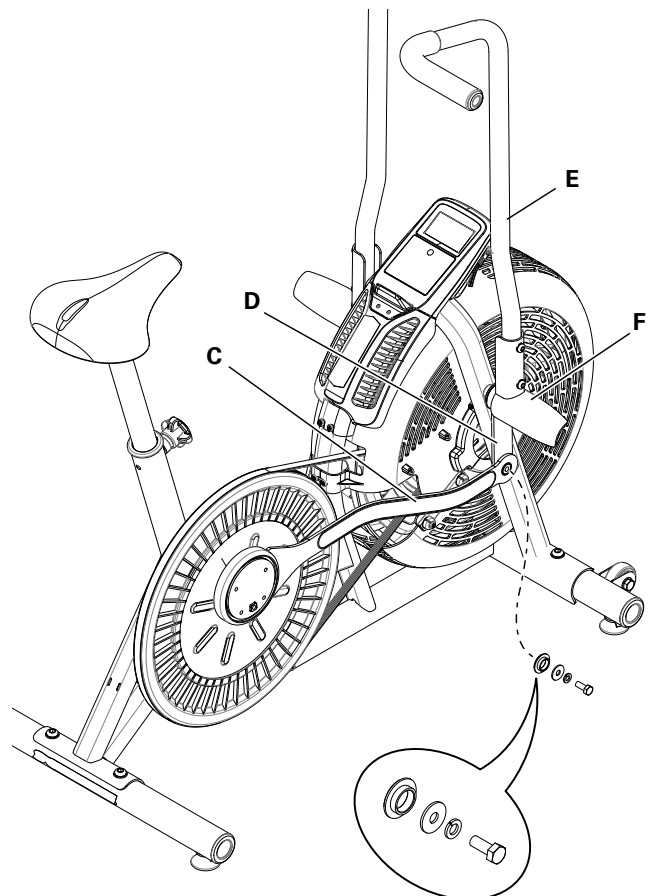
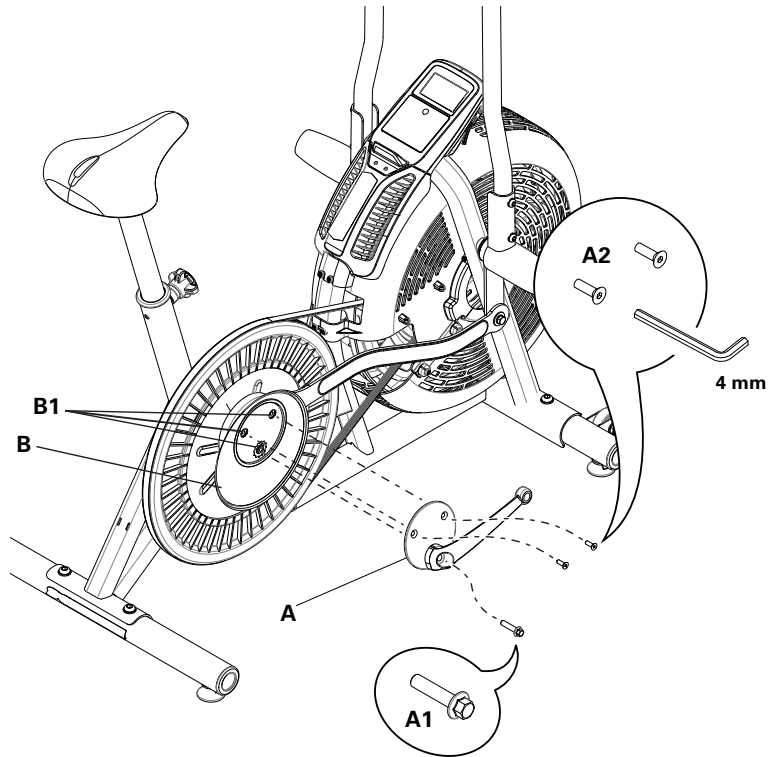
3. Loosen and remove the Hardware (A1, A2) that attaches the Crank Arm (A) to the Crank Cover (B). Remove the Crank Arm and the Star Washers (B1) from the Crank Cover. Set the hardware safely aside for reassembly.

4. Remove the Crank Cover (B).

5. Loosen and remove the hardware that attaches the Connector Arm (C) to the Arm Pivot (D). Set the hardware safely aside for reassembly.



To prevent possible serious injury, hold the Handlebar (E) so that it does not fall. Tilt it forward and set the free end of the Handlebar on the floor.
Or remove the Handlebar and Footpeg (F). Refer to the “Replacing the Handlebars and Footpegs” procedure in this manual. Set the hardware safely aside for reassembly.



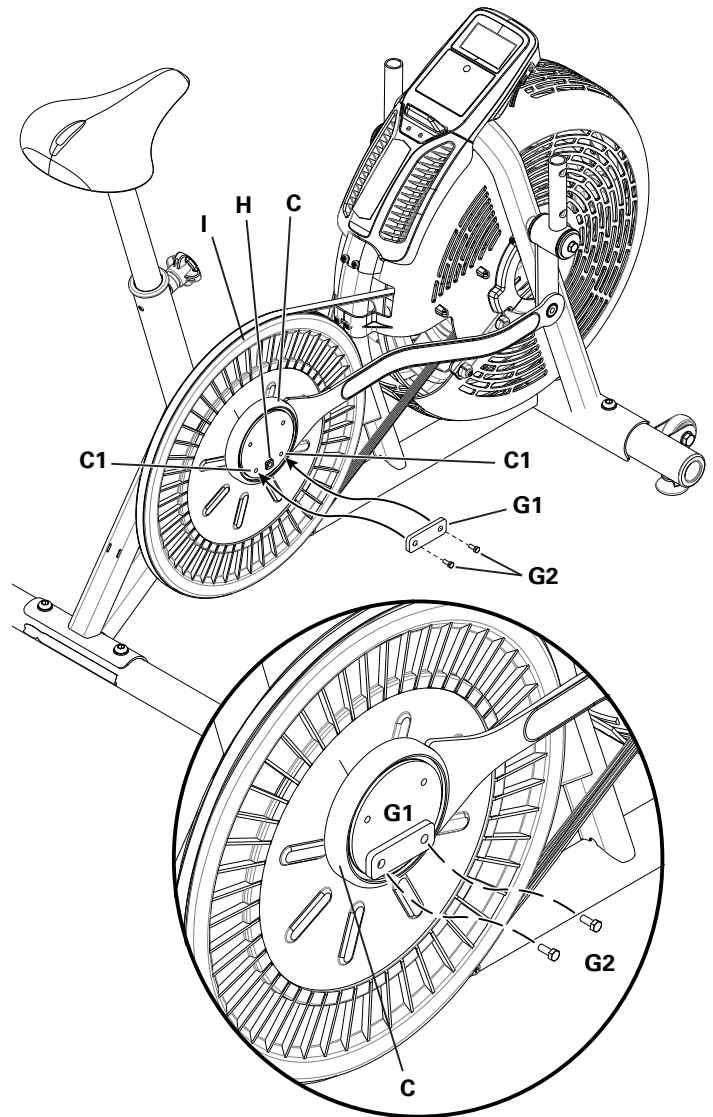
6. Align the holes in the Spindle Removal Plate (G1) on the 2 screw holes (C1) near the Spindle (H) in the Connector Arm (C). Carefully tighten the 2 Spindle Removal Bolts (G2) through the holes into the Connector Arm until the Connector Arm (C) disengages from the Drive Pulley (I).

NOTICE: Turn one bolt a few turns, and then the other, to tighten the plate evenly.

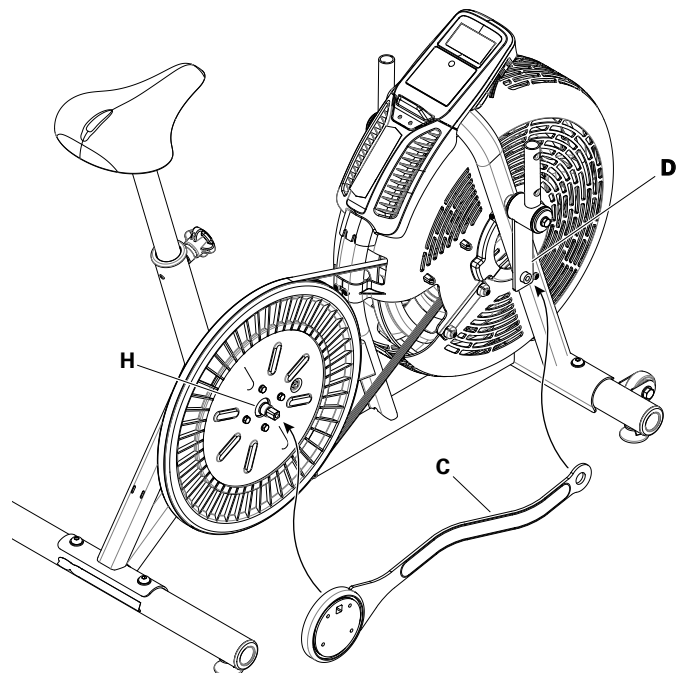


Stabilize the Drive Pulley to prevent movement as you tighten the plate. Hold the Connector Arm as it can disengage very suddenly (pop off) and fall.

7. When the Connector Arm (C) comes off, loosen and remove the Spindle Removal Bolts (G2) and Plate (G1). Set the tool and old Connector Arm safely aside.



8. Align the large hole in the replacement Connector Arm (C) on the Spindle (H). Be sure the Connector Arm is correctly oriented to the Arm Pivot (D).



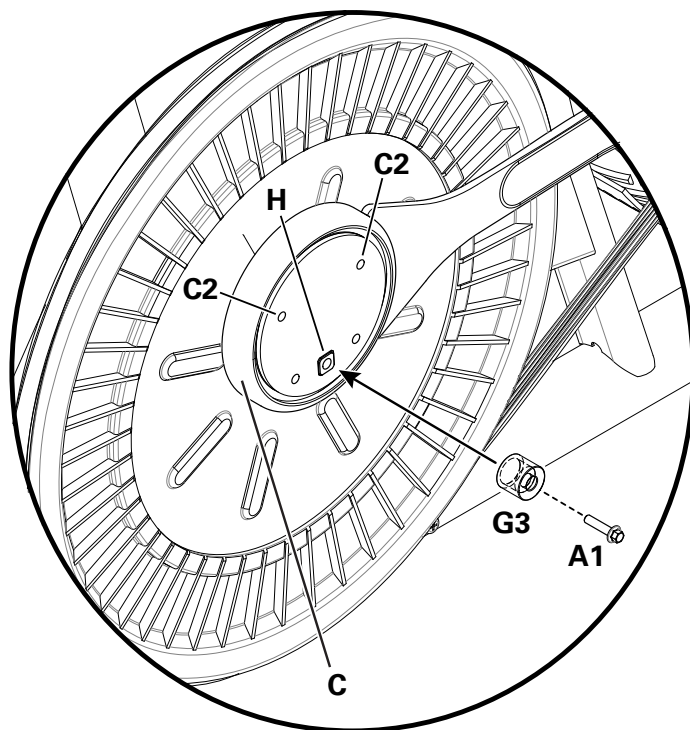
9. Put the Press-in Spacer (G3) on the Spindle (H). Be sure the wide opening on the Press-in Spacer is against the Connector Arm (C). Tighten the Crank Arm Hex Head Bolt (A1) into the Press-in Spacer and Spindle until the Connector Arm engages the Spindle. Loosen and remove the Crank Arm Hex Head Bolt and the Spacer.

10. Attach the Connector Arm (C) to the Pivot Arm (D) with the hardware from step 5.

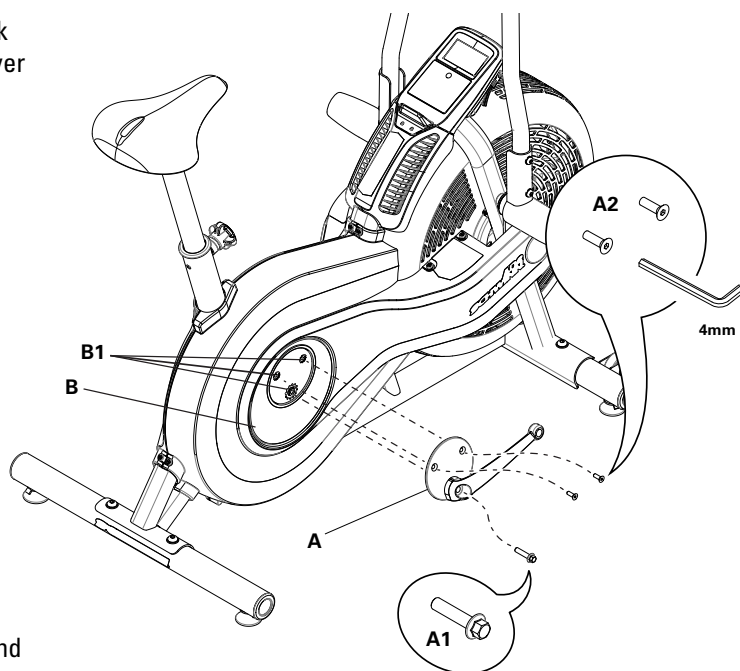
Note: If you removed the Handlebar (E) and Footpeg (F), reinstall them.

11. Put the Crank Cover (B) in position on the Connector Arm (C). Install the Shrouds with the hardware from step 2. Refer to the "Replacing the Shrouds" procedure in this manual.

Note: Make sure that the 2 small holes in the Crank Cover are aligned with the 2 screw holes (C2) farthest from the Spindle (H) in the Connector Arm.



12. Put the star washers (B1) from step 4 in position on the Crank Cover (B). Align the holes in the Crank Arm (A) with the Crank Cover and install the hardware (A1, A2) from step 3.



13. Final Inspection

Inspect your machine to ensure that all hardware is tight and components are properly assembled.



Do not use until the machine has been fully assembled and inspected for correct performance in accordance with the Owner's Manual.

Replacing the Fan Covers



Disconnect the data cable from the console before you service this machine.

Note: Your machine may not match the image. For reference only.

To remove the Front Fan Cover:

Tools required: pedal wrench, #2 Phillips screwdriver

1. Remove the Pedals. Refer to the “Replacing the Pedals” procedure in this manual.

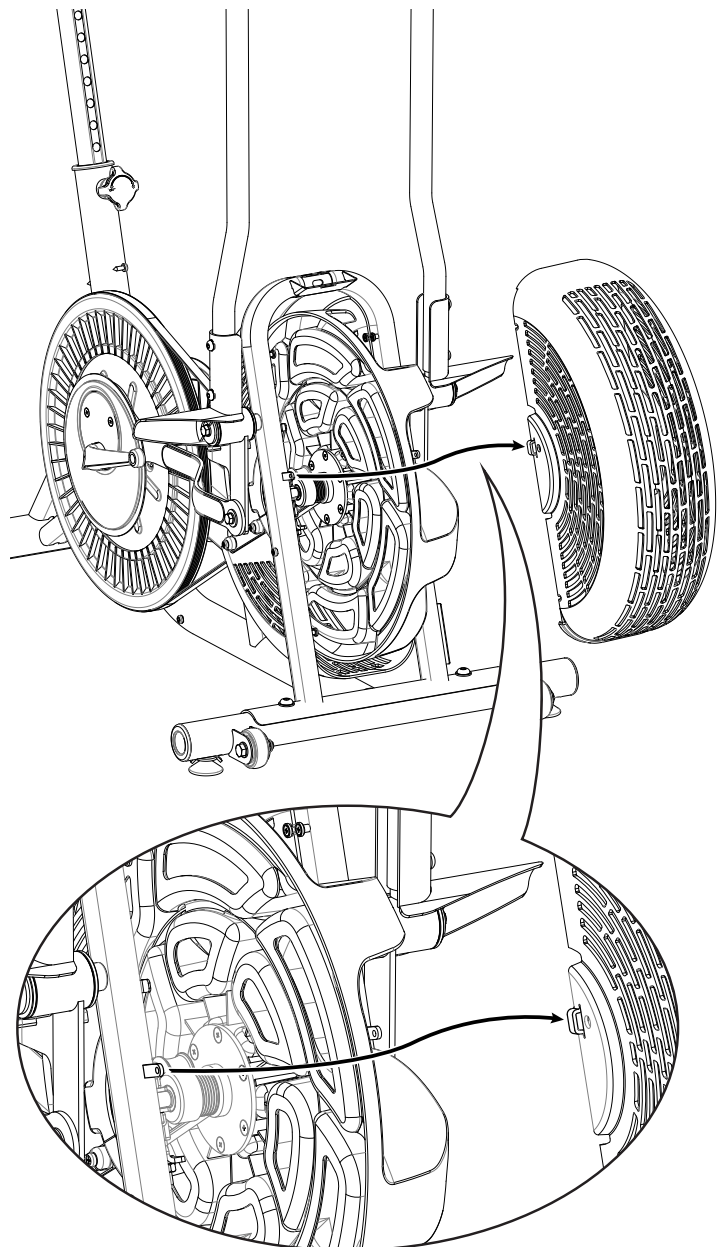
2. Carefully remove the Shrouds. Refer to the “Replacing the Shrouds and Vent Cover” procedure in this manual. Set the hardware safely aside for reassembly.

Note: The hardware that attaches the Front Fan Cover is removed during Shroud removal.

3. Slide the Front Fan Cover forward to disengage the tabs from the Frame brackets. Lift slightly to disengage from the screws inside the Frame uprights, and remove it.

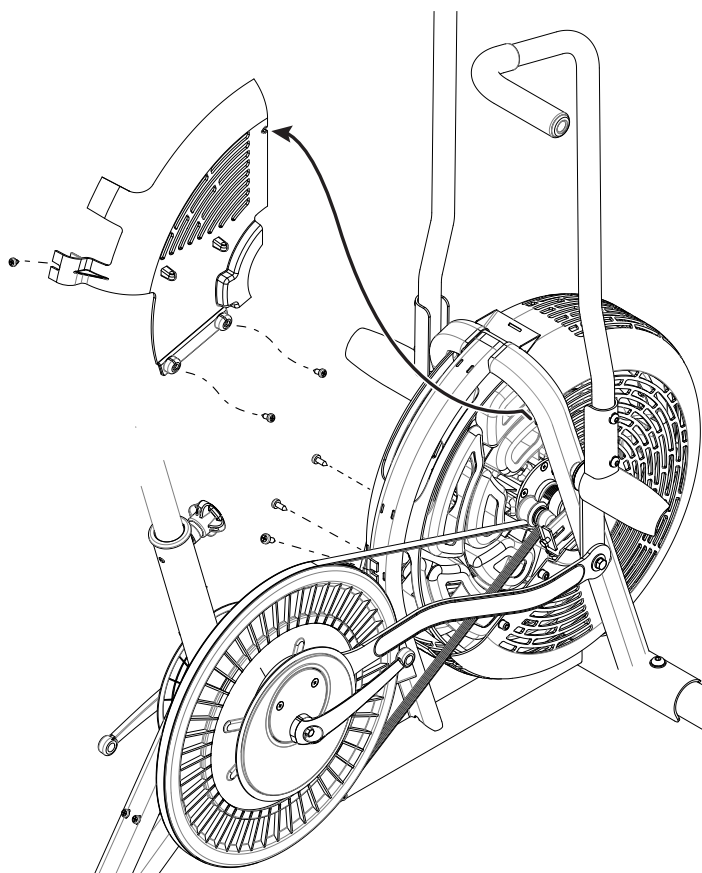
4. Installation is the reverse procedure.

Note: Be sure the Frame brackets go into the tabs on the Front Fan Cover.



To remove the Rear Fan Covers and Bottom Fan Cover:

1. Remove the Pedals. Refer to the “Replacing the Pedals” procedure in this manual.
2. Carefully remove the Shrouds, Console and Vent Cover. Refer to the “Replacing the Shrouds and Vent Cover” procedure in this manual. Set the hardware safely aside for reassembly.
3. Loosen and remove the hardware that attaches each Rear Fan Cover to the Bottom Fan Cover and Frame. Slightly lift the Rear Fan Cover to disengage from the screws inside the Frame upright, and remove the Rear Fan Cover. Set the hardware safely aside for reassembly.




Note: To remove the Bottom Fan Cover, you must remove the Front Fan Cover.

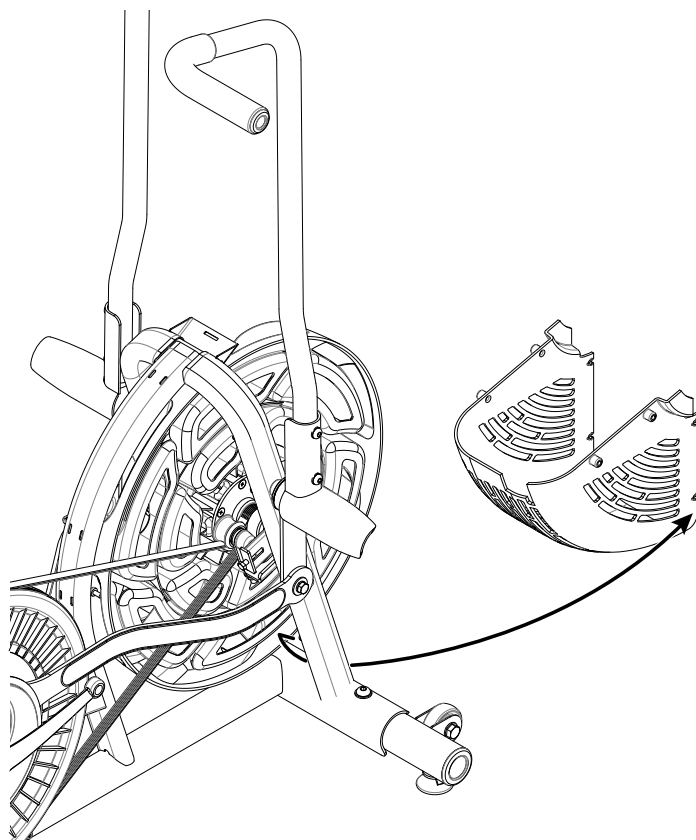
4. Be sure the hardware that attaches the Bottom Fan Cover to the Rear Fan Covers is already removed. Slightly lift the Bottom Fan Cover to disengage from the screws inside the Frame uprights, and remove the Bottom Fan Cover.

5. Installation is the reverse procedure.

6. Final Inspection

Inspect your machine to ensure that all hardware is tight and components are properly assembled.

 Do not use until the machine has been fully assembled and inspected for correct performance in accordance with the Owner's Manual.



Replacing the Speed Sensor



Disconnect the data cable from the console before you service this machine.

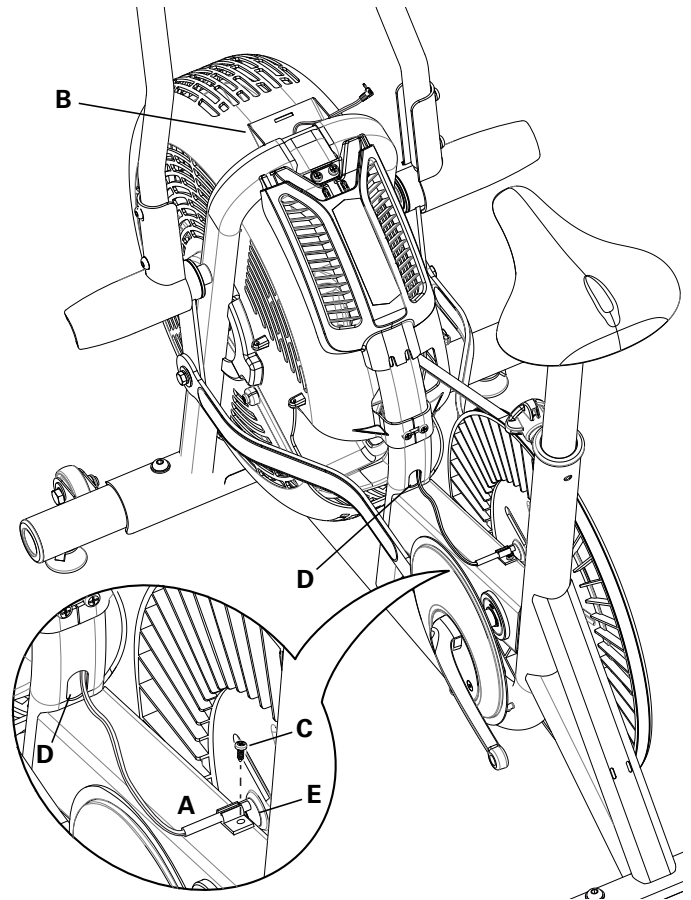
Note: Your machine may not match the image. For reference only.

Tools required: pedal wrench, flathead screwdriver, #2 Phillips screwdriver, hook or bent wire

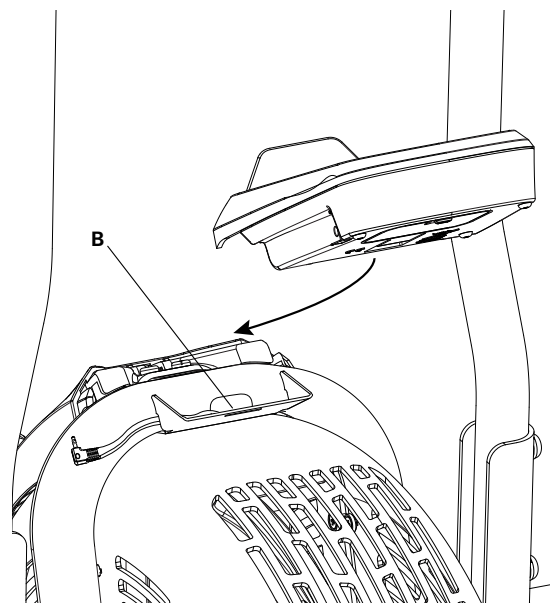
1. Remove the Pedals. Refer to the “Replacing the Pedals” procedure in this manual.
2. Carefully remove the Shrouds and Console. Refer to the “Replacing the Shrouds and Vent Cover” procedure in this manual. Set the hardware safely aside for reassembly.

NOTICE: Do not crimp the cable.

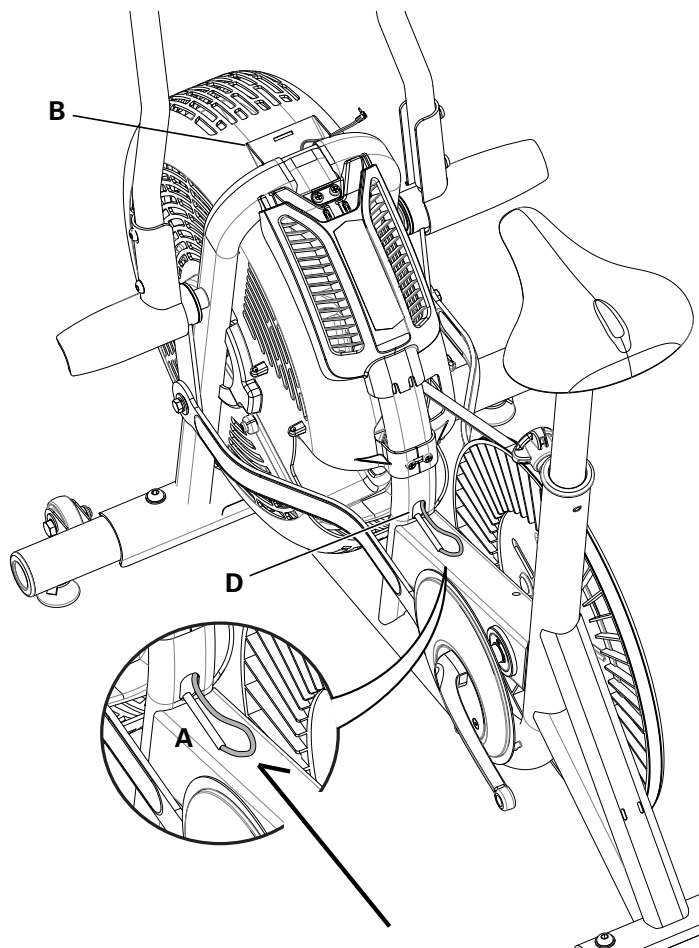
3. Remove the hardware (C) that attaches the old Speed Sensor (A) to the Main Frame. Remove the Speed Sensor (A) from the bracket.



4. Observe how the cable is routed from the Speed Sensor (A) to the Console Bracket (B) on the Frame. Pull the cable from the Frame opening at the Console Bracket and pull the old Speed Sensor through the tube. Discard the old Speed Sensor and cable.
5. Carefully put the replacement Speed Sensor through the side opening in the Console Bracket (B). Point the Speed Sensor into the Frame opening and slowly route the Speed Sensor and cable down the tube.



6. When the Speed Sensor (A) is past the bottom opening (D) in the tube, use the hook to catch the data cable. Carefully pull out the Speed Sensor and cable through the opening.



7. Install the new Speed Sensor (A) to the Main Frame.

8. Reinstall the Console.

NOTICE: Do not crimp the cable.

9. Reinstall the Shrouds and Pedals.

Note: Before fully attaching the Shrouds, verify that the Speed Sensor (A) and Speed Sensor Magnet (E) on the Drive Pulley do not touch.

10. Final Inspection

Inspect your machine to ensure that all hardware is tight and components are properly assembled.



Do not use until the machine has been fully assembled and inspected for correct performance in accordance with the Owner's Manual.

Replacing the Drive Belt



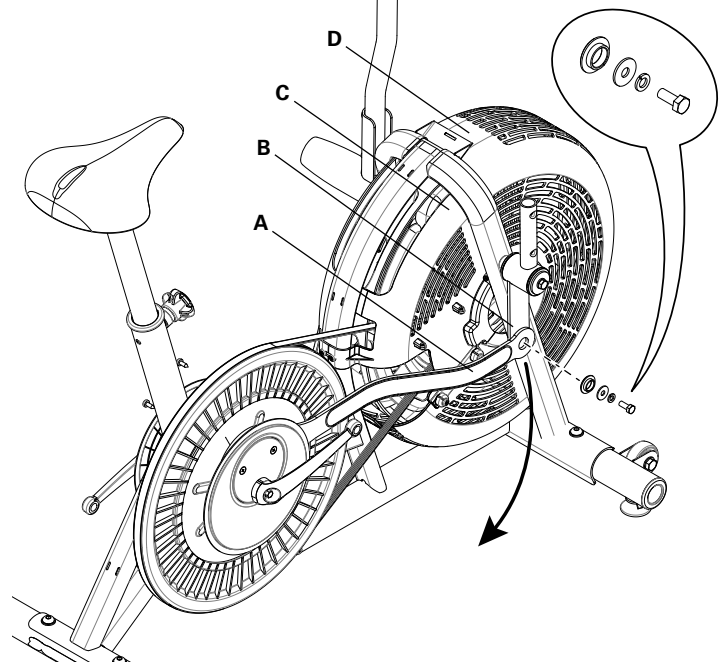
Disconnect the data cable from the console before you service this machine.

Note: Your machine may not match the image. For reference only.

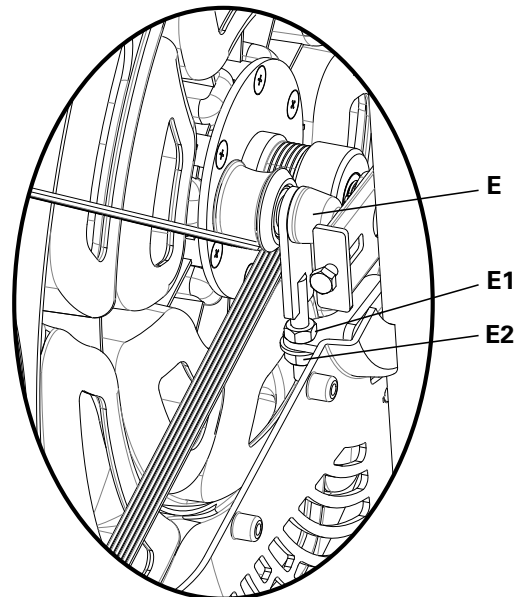
Tools required: pedal wrench, #2 Phillips screwdriver, 13mm open end wrench or socket and wrench (or nutdriver)

1. Remove the Pedals. Refer to the “Replacing the Pedals” procedure in this manual.
2. Carefully remove the Shrouds, Console and Vent Cover. Refer to the “Replacing the Shrouds and Vent Cover” procedure in this manual. Set the hardware safely aside for reassembly.
3. Remove the right Handlebar and Footpeg. Refer to the “Replacing the Handlebars and Footpegs” procedure in this manual. Set the hardware safely aside for reassembly.
4. Loosen and remove the hardware that attaches the Right Connector Arm (A) to the Arm Pivot (B). Set the free end of the Connector Arm on the floor. Set the hardware safely aside for reassembly.
5. Remove the Front Fan Cover (D). Refer to the “Replacing the Fan Covers” procedure in this manual. Set the hardware safely aside for reassembly.

Note: It may also be necessary to remove the Right Rear Fan Cover (C).



6. Make a note of the setting of the Belt Tensioner (E): the number of bolt threads showing. To loosen the belt tension, turn the upper nut (E1) and lower nut (E2).



7. Slowly turn the Drive Pulley (F) backward and carefully ease the Drive Belt (G) off the Drive Pulley to the outside.



Be sure to keep fingers clear of all pinch hazards as you turn the Drive Pulley.

8. Carefully move the Fan Assembly (H) forward to disengage from the Main Frame brackets (I).

9. Move the Drive Belt (G) off the Fan Assembly pulley (H1).

10. Remove the old Drive Belt (G) and discard it.

11. Hold the Fan Assembly (H) near the Main Frame brackets (I) and put the new Drive Belt (G) in position on the Fan Assembly pulley (H1). Put the Drive Belt in position around the Belt Tensioner (E).

Note: Be sure that the upper portion of the Drive Belt is under the bearings on the Belt Tensioner.

NOTICE: This step may require two people.

12. Align the Fan Assembly axle (H2) in the Main Frame brackets (I). Carefully roll it back into position.

13. Slowly turn the Drive Pulley (F) forward and ease the Drive Belt (G) onto the Drive Pulley. Make sure the Drive Belt is aligned on the Fan Assembly pulley (H1), Belt Tensioner (E) and Drive Pulley.

14. Adjust the Belt Tensioner (E) to the setting noted in step 6.

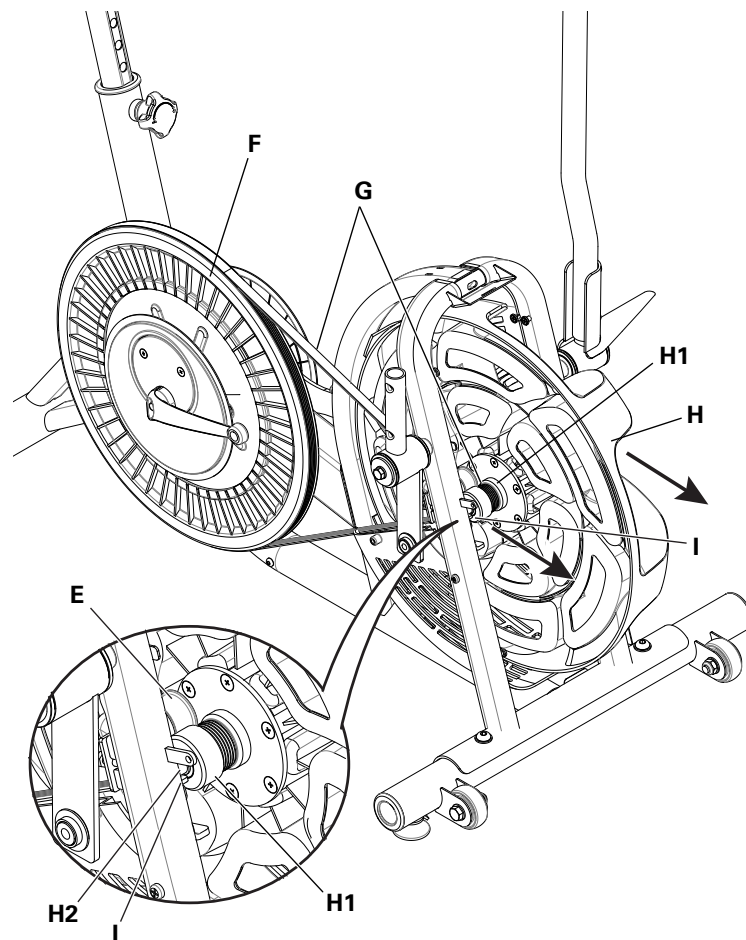
15. Before you reinstall the Fan Covers, make sure that the belt tension is correct. Refer to the "Belt Tension Adjustment" section in this manual.

16. Final Inspection

Inspect your machine to ensure that all hardware is tight and components are properly assembled.



Do not use until the machine has been fully assembled and inspected for correct performance in accordance with the Owner's Manual.



Replacing the Belt Tensioner Assembly (Idler Assembly)

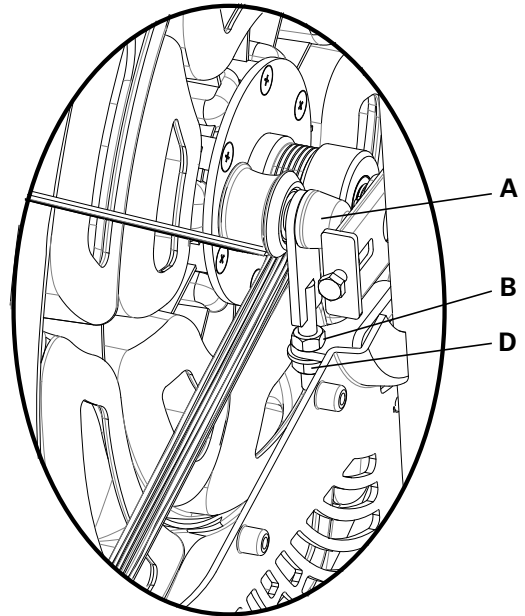


Disconnect the data cable from the console before you service this machine.

Note: Your machine may not match the image. For reference only.

Tools required: pedal wrench, flathead screwdriver, #2 Phillips screwdriver, 13 mm open end wrench or socket and wrench

1. Remove the Pedals. Refer to the “Replacing the Pedals” procedure in this manual.
2. Carefully remove the Shrouds, Console and Vent Cover. Refer to the “Replacing the Shrouds and Vent Cover” procedure in this manual. Set the hardware safely aside for reassembly.
3. Remove the Right Rear Fan Cover. Refer to the “Replacing the Fan Covers” procedure in this machine. Set the hardware safely aside for reassembly.
Note: It may also be necessary to remove the Front, Left Rear and Bottom Fan Covers.
4. Make a note of the setting of the Belt Tensioner (A): the number of bolt threads showing. To loosen the belt tension, turn the upper nut (B) and lower nut (D).

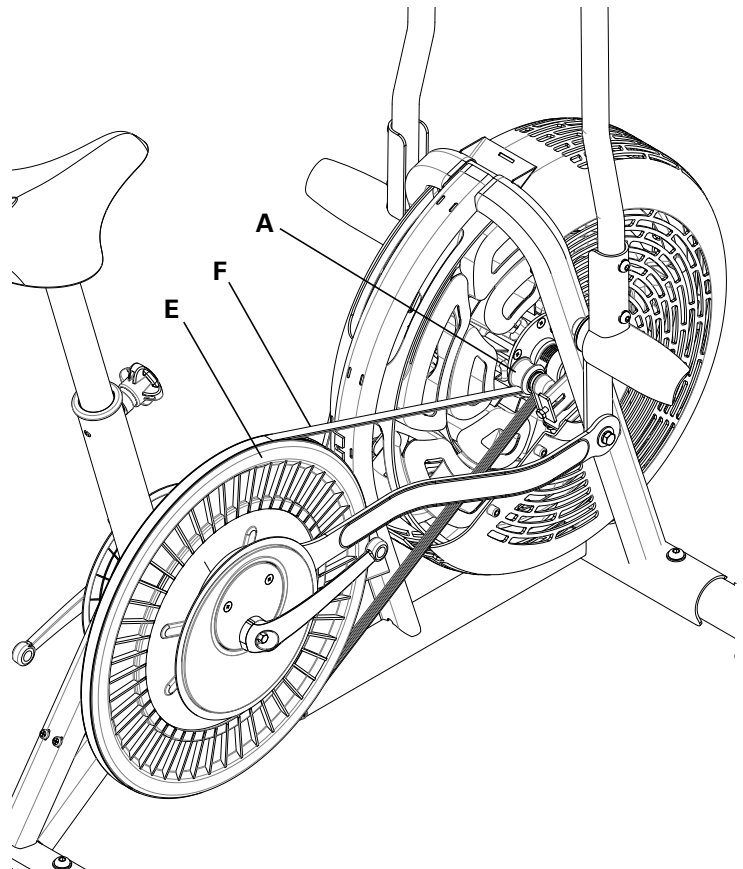


5. Slowly turn the Drive Pulley (E) backward and carefully ease the Drive Belt (F) off the Drive Pulley to the outside.



Be sure to keep fingers clear of all pinch hazards as you turn the Drive Pulley.

6. Remove the Drive Belt (F) from the Belt Tensioner (A).



7. Loosen and remove the Belt Tensioner hardware (B, C, D).

8. Remove the Belt Tensioner assembly (A) from the Main Frame bracket (G). Discard the old Belt Tensioner assembly.

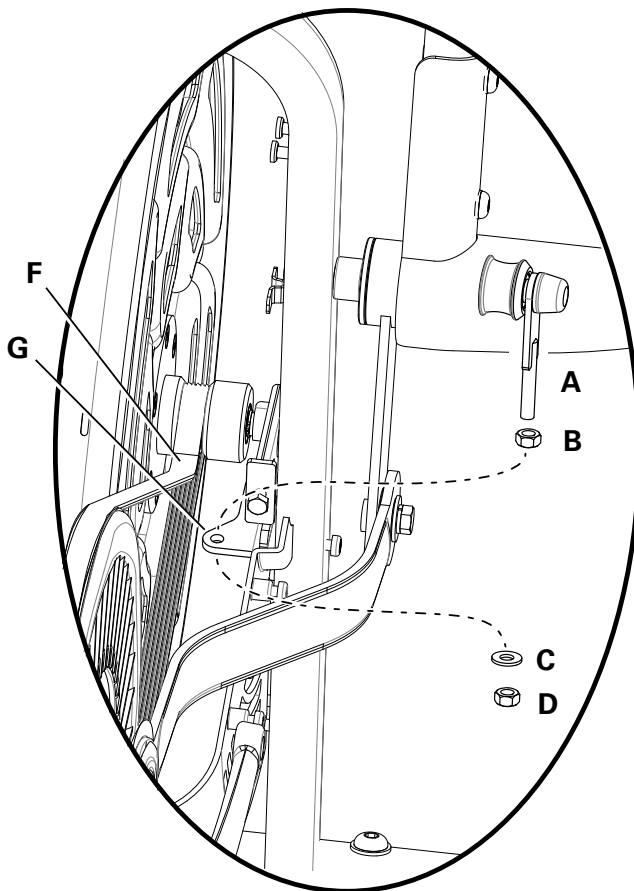
9. Installation is the reverse procedure.

Note: Be sure that the upper portion of the Drive Belt (F) is under the bearings on the Belt Tensioner (A). Adjust the Belt Tensioner to the setting recorded in step 4.

10. Before you reinstall the Fan Covers, make sure that the belt tension is correct. Refer to the "Belt Tension Adjustment" section in this manual.

11. Final Inspection

Inspect your machine to ensure that all hardware is tight and components are properly assembled.



Do not use until the machine has been fully assembled and inspected for correct performance in accordance with the Owner's Manual.

Replacing the Fan Assembly and Fan Tensioner Assemblies

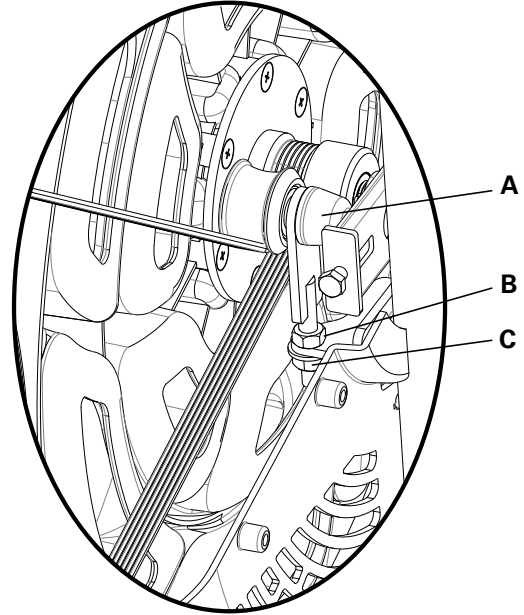


Disconnect the data cable from the console before you service this machine.

Note: Your machine may not match the image. For reference only.

Tools required: pedal wrench, #2 Phillips screwdriver, 13mm open end wrench or socket and wrench (or nutdriver), 11mm open end wrench or socket and wrench (or nutdriver)

1. Remove the Pedals. Refer to the “Replacing the Pedals” procedure in this manual.
2. Carefully remove the Shrouds, Console and Vent Cover. Refer to the “Replacing the Shrouds and Vent Cover” procedure in this manual. Set the hardware safely aside for reassembly.
3. Remove the Front and Rear Fan Covers. Refer to the “Replacing the Fan Covers” procedure in this manual. Set the hardware safely aside for reassembly.
4. Make a note of the setting of the Belt Tensioner (A): the number of bolt threads showing. To loosen the belt tension, turn the upper nut (B) and lower nut (C).



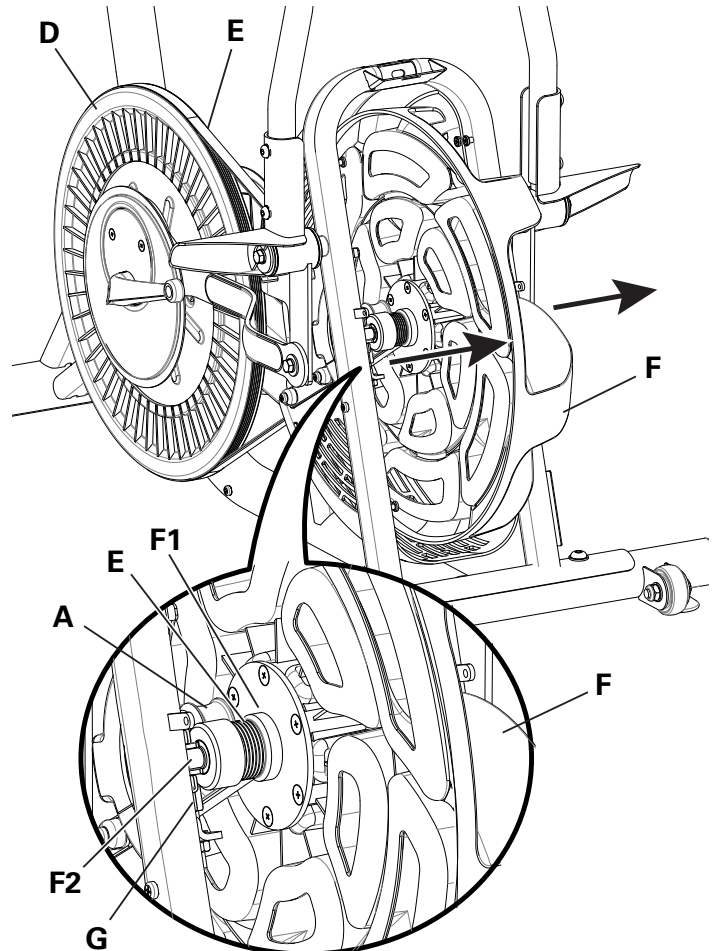
5. Slowly turn the Drive Pulley (D) backward and carefully ease the Drive Belt (E) off the Drive Pulley to the outside.



Be sure to keep fingers clear of all pinch hazards as you turn the Drive Pulley.

6. Carefully move the Fan Assembly (F) forward to disengage from the Main Frame brackets (G) on both sides. Remove the Drive Belt (E) from the Fan Assembly pulley (F1).

7. Remove the old Fan Assembly (F) and discard it.



8. Make a note of the setting of the Fan Tensioner Assemblies (H): the number of threads showing on the bolt (H1). Loosen and remove the Fan Tensioner Assemblies from the Main Frame brackets (G). Discard the old Fan Tensioner Assemblies.

9. Install the replacement Fan Tensioner Assemblies (H) in the Main Frame brackets (G). Adjust the Fan Tensioner bolt (H1) and tensioner (H2) to the settings noted in step 8.

10. Hold the Fan Assembly (F) near the Main Frame brackets (G) and put the Drive Belt (E) in position on the Fan Assembly pulley (F1). Put the Drive Belt in position around the Belt Tensioner (A).

Note: Be sure that the upper portion of the Drive Belt is under the bearings on the Belt Tensioner.

NOTICE: This step may require two people.

11. Align the Fan Assembly axle (F2) in the Main Frame brackets (G). Carefully roll it back into position.

12. Slowly turn the Drive Pulley (D) forward and ease the Drive Belt (E) onto the Drive Pulley. Make sure the Drive Belt is aligned on the Fan Assembly pulley (F1), Belt Tensioner (A) and Drive Pulley.

13. Adjust the Belt Tensioner (A) to the setting noted in step 4.

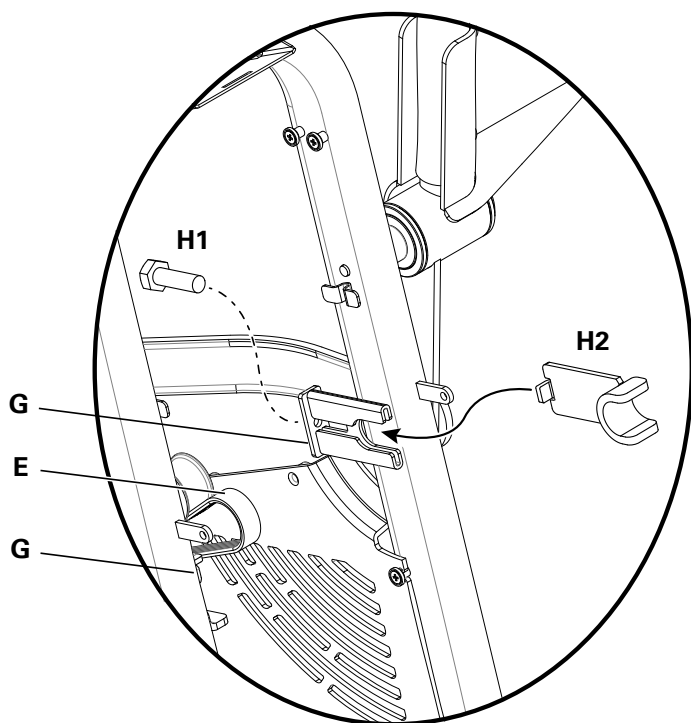
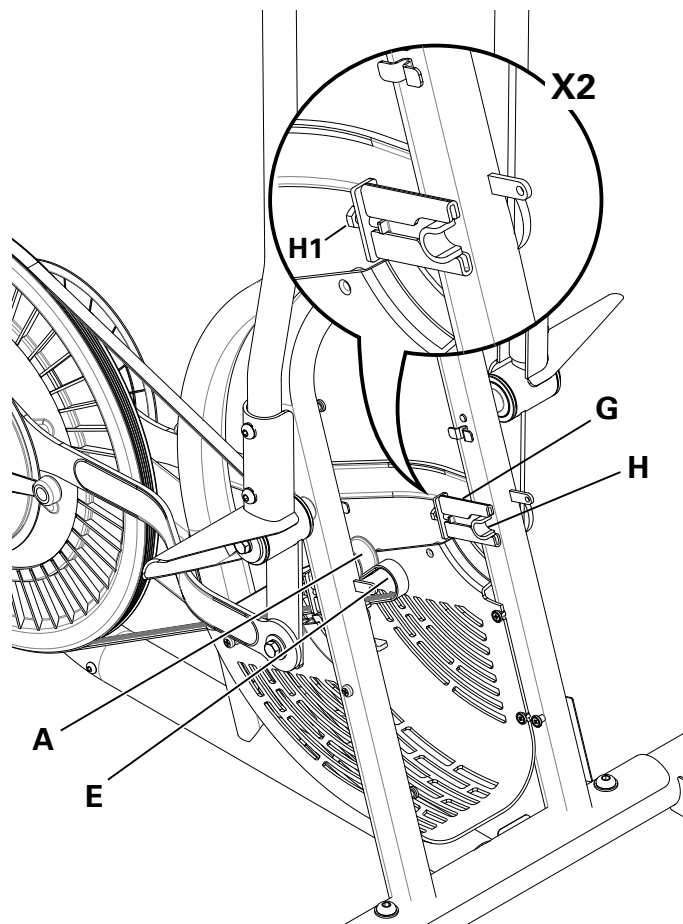
NOTICE: Before you replace the Covers and Shrouds, check the fan tension and drive belt tension. Adjust if necessary.

14. Final Inspection

Inspect your machine to ensure that all hardware is tight and components are properly assembled.



Do not use until the machine has been fully assembled and inspected for correct performance in accordance with the Owner's Manual.



Replacing the Drive Pulley, Pulley Shaft and Crank Bearing



Disconnect the data cable from the console before you service this machine.

Note: Your machine may not match the image. For reference only.

Tools required: #2 Phillips screwdriver, M8 socket and wrench, M6 socket and wrench, Spindle Removal Plate tool, safety goggles or other eye protection, snap ring removal tool, rubber mallet (or wooden block and hammer)

1. Remove the Pedals and Crank Arms. Refer to the “Replacing the Pedals” procedure and “Replacing the Crank Arms” procedure in this manual. Set the hardware safely aside for reassembly.

2. Carefully remove the Shrouds, Console and Vent Cover. Refer to the “Replacing the Shrouds and Vent Cover” procedure in this manual. Set the hardware safely aside for reassembly.

3. Remove the Handlebars and Footpegs. Refer to the “Replacing the Handlebars and Footpegs” procedure in this manual. Set the hardware safely aside for reassembly.

4. Remove the Crank Cover and Connector Arm. Refer to the “Replacing the Crank Covers and Connector Arms” procedure in this manual. Set the hardware safely aside for reassembly.

Note: It may also be helpful to remove the Pivot Arms. Refer to the “Replacing the Pivot Arms” procedure in this manual. Set the hardware safely aside for reassembly.

5. Remove the Right Rear Fan Cover. Refer to the “Replacing the Fan Covers” procedure in this manual. Set the hardware safely aside for reassembly.

Note: It may also be necessary to remove the Front, Left Rear and Bottom Fan Covers.

6. Make a note of the setting of the Belt Tensioner (A): the number of bolt threads showing. To loosen the belt tension, turn the upper nut (B) and lower nut (C).

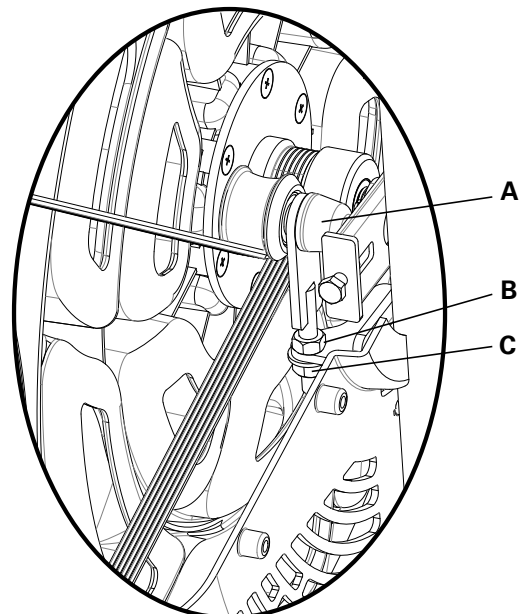
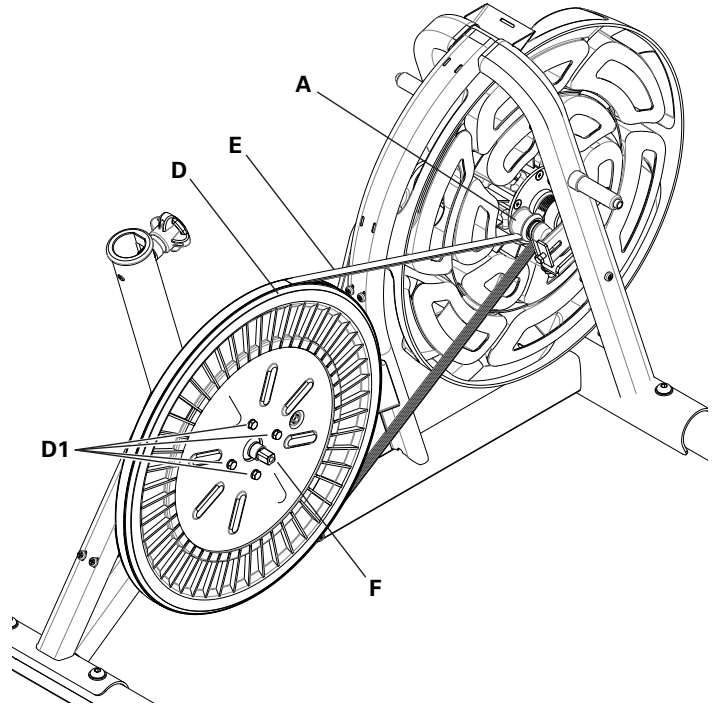
10. Slowly turn the Drive Pulley (D) backward and carefully ease the Drive Belt (E) off the Drive Pulley to the outside.



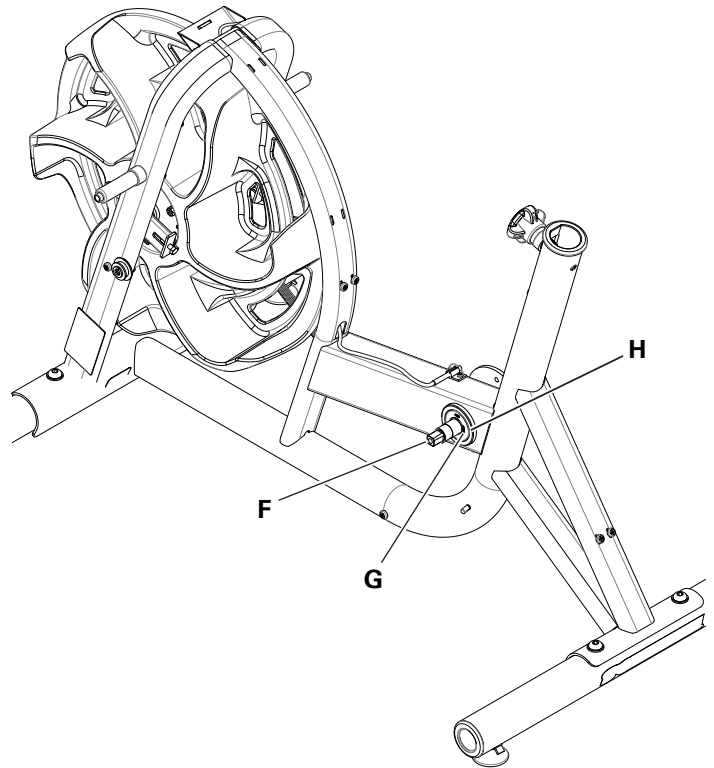
Be sure to keep fingers clear of all pinch hazards as you turn the Drive Pulley.

7. Loosen and remove the bolts (D1) that attach the Drive Pulley (D) to the Pulley Shaft Assembly (F).

8. Slide the Drive Pulley (D) off the Pulley Shaft (F).



9. Using eye protection, remove the C-Clip (G) from the Pulley Shaft Assembly (F).



10. Using eye protection and a rubber mallet (or wooden block and hammer), gently strike the Pulley Shaft Assembly (F) until it works out of the Frame and releases the Crank Bearings (H).

Note: One Crank Bearing will be left in the Frame after the axle is removed.

11. Installation is the reverse procedure.

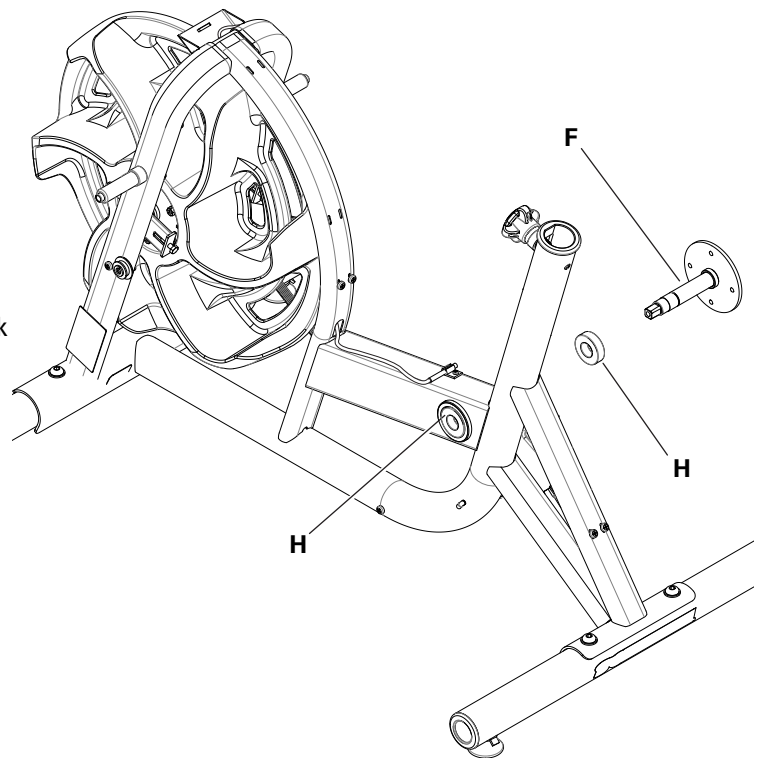
NOTICE: Before you replace the Covers and Shrouds, check the belt tension and adjust if necessary.

12. Final Inspection

Inspect your machine to ensure that all hardware is tight and components are properly assembled.



Do not use until the machine has been fully assembled and inspected for correct performance in accordance with the Owner's Manual.



Maintenance Parts Exploded View

Your machine may differ. Use only as a guide.

A	Console	H	Crank Arms	O	Speed Sensor Magnet
B	Handlebars	I	Crank Covers	P	Data Cable
C	Fan Assembly	J	Pedals	Q	RPM Sensor
D	Fan Covers	K	Shroud, Right	R	Levelers
E	Footpegs	L	Shroud, Left	S	Seat
F	Arm Pivots	M	Drive Pulley	T	Seat Post
G	Connector Arms	N	Drive Belt	U	Adjustment Knob

