

Accessory Rack Assembly Instructions

Table of Contents

Product Specifications2

Safety Requirements3

Complete Rack Component Diagram4

Parts List.....4

Assembly Steps.....5

Storing Your Accessories.....9

Warranty Information.....10

Contact Information11

Product Specifications

Dimensions: 41" L x 26" W x 37" H (104cm x 66cm x 94cm)

Assembled Unit Weight: 52 lbs. (23.6 kg)

Shippng Package Weight: 61.6 lbs. (28 kg)

Safety Requirements

IMPORTANT SAFETY INSTRUCTIONS

The following definition applies to the word “Caution” found throughout this manual:



Used to call attention to POTENTIAL hazards that could result in personal injury or damage to equipment.



READ ALL INSTRUCTIONS BEFORE USING THE EQUIPMENT.

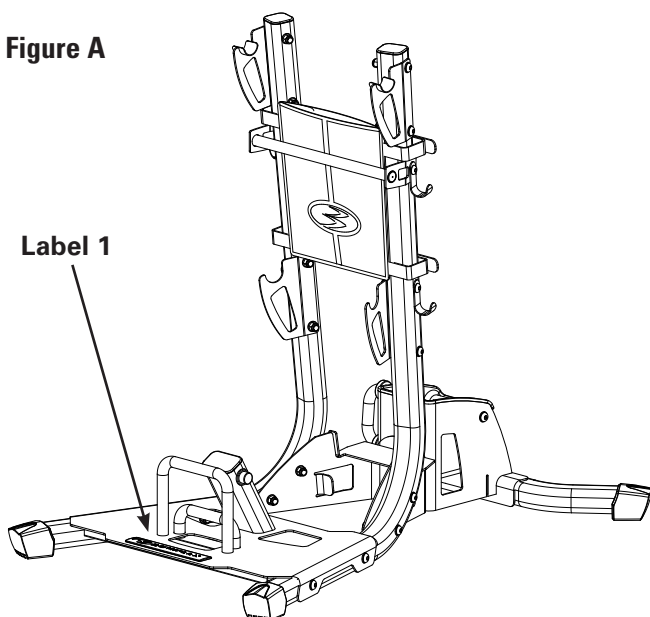
- Always read and follow the Safety labels attached to your Bowflex Ultimate[®] 2 Accessory Rack. Do not remove these labels. If you need replacement labels, please call a Nautilus Representative at 1-800-NAUTILUS (628-8458).
- Read the manual and follow it carefully before using the rack.
- Never allow children to use the Bowflex Ultimate[®] 2 Accessory Rack unsupervised. To do so could result in injury. This equipment is under no circumstances suitable as a children's toy.
- Inspect your rack for any worn or loose components prior to use. Tighten or replace any worn or loose components prior to use.
- Set up and use your Bowflex Ultimate[®] 2 Accessory Rack on a hard, level surface.
- Use your Bowflex Ultimate[®] 2 Accessory Rack ONLY to store accessory equipment for your Bowflex Ultimate[®] 2 home gym. Store each accessory only in its designated holder on the rack.

Safety Warning Labels

The following safety warnings are located in site specific areas on the Bowflex Ultimate[®] 2 Accessory Rack. Please read all safety precautions and warning information prior to using your product. Be sure to replace any warning label if damaged, illegible, or missing. If you need replacement labels, please call a Nautilus Representative at 1-800-NAUTILUS (628-8458)

Label 1: Please make sure all users read, understand, and follow the warning labels on the rack. See Figure A.

Figure A

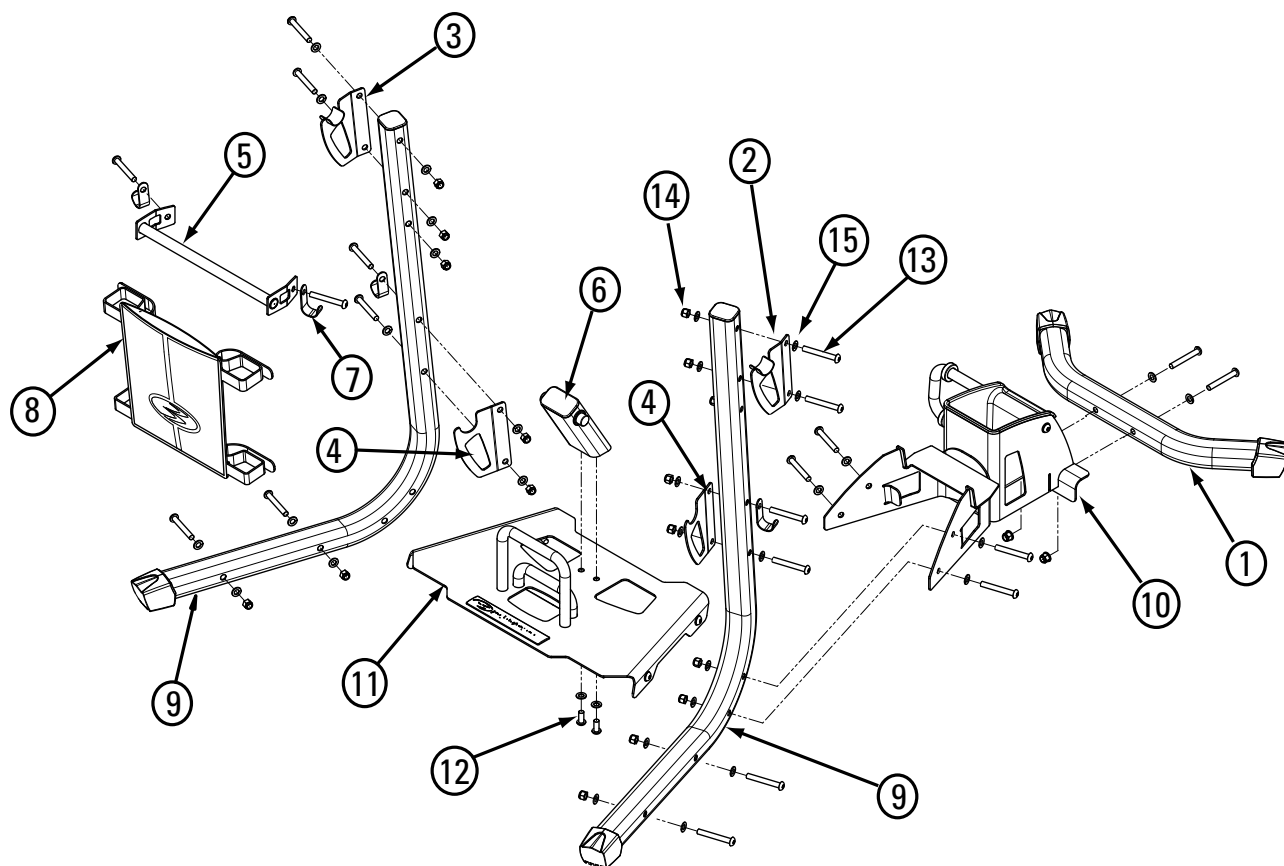


Location: The warning label in Figure B is located on the Base Plate under the U-bar. Store only the Leg Extension on this holder.

Figure B



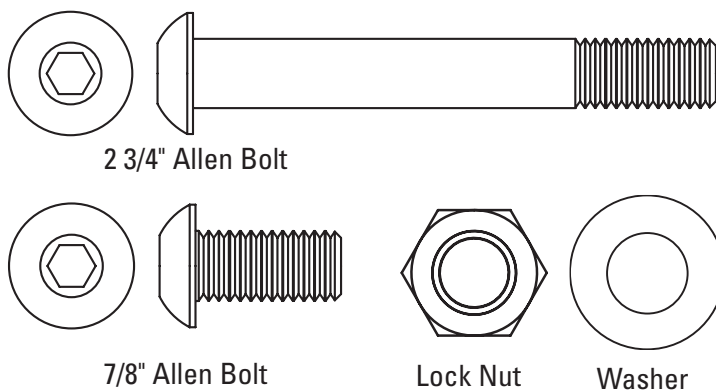
Complete Rack Component Diagram



Parts

#	Qty.	Description
1	1	BASE SUPPORT
2	1	CURL BAR HOOK, RIGHT
3	1	CURL BAR HOOK, LEFT
4	2	BRACKET, BAR HOOK
5	1	TOWEL RACK
6	1	MOUNT, PREACHER CURL ASSEMBLY
7	4	WASHER HOOK
8	1	FLEX BAG
9	2	SIDE TUBE ASSEMBLY
10	1	BOTTOM BRACKET ASSEMBLY
11	1	BASE PLATE ASSEMBLY
12	2	3/8" X 7/8" ALLEN BOLT
13	20	3/8" X 2 3/4" ALLEN BOLT
14	20	3/8" NYLOCK NUT
15	38	M10 or 3/8" WASHER

Hardware



Tools Required

7/32" Allen Wrench (included)



You will also need:

9/16" Socket Wrench
 9/16" Wrench or Adjustable Wrench
 Utility knife or scissors to cut nylon ties

Parts:

- Side Tubes (#9)
- Bottom Bracket (#10)

Hardware

Qty

- 2 3/4" Bolts (#13) 4
- Washers (#15) 8
- Nuts (#14) 4

Tools:

- Allen wrench (7/32")
- Wrench/Socket (9/16") or Open End Wrench

- 1-1** Attach the Bottom Bracket (#10) to the Side Tubes (#9) using the hardware shown in **Figure 1**.

Note: Do not tighten hardware at this time.

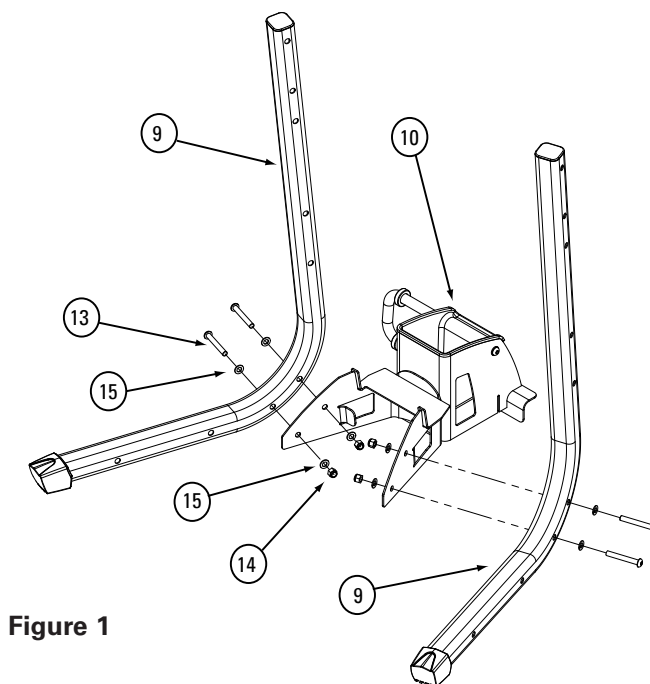


Figure 1

Parts:

- Base assembly from Step 2
- Base Support (#1)

Hardware

Qty

- 2 3/4" Bolts (#13) 2
- Washers (#15) 4
- Nuts (#14) 2

Tools:

- Allen wrench (7/32")
- Wrench/Socket (9/16") or Open End Wrench

- 2-1** Carefully tilt the base assembly forward to rest on the four Side Tube ends. Attach the Base Support (#1) to the Bottom Bracket (#12) using the hardware as shown in **Figure 2**. Make sure that the Base Support feet are pointing away from the base assembly.

Note: Do not tighten hardware at this time.

- 2-2** Turn the base assembly upright to rest on all four feet.

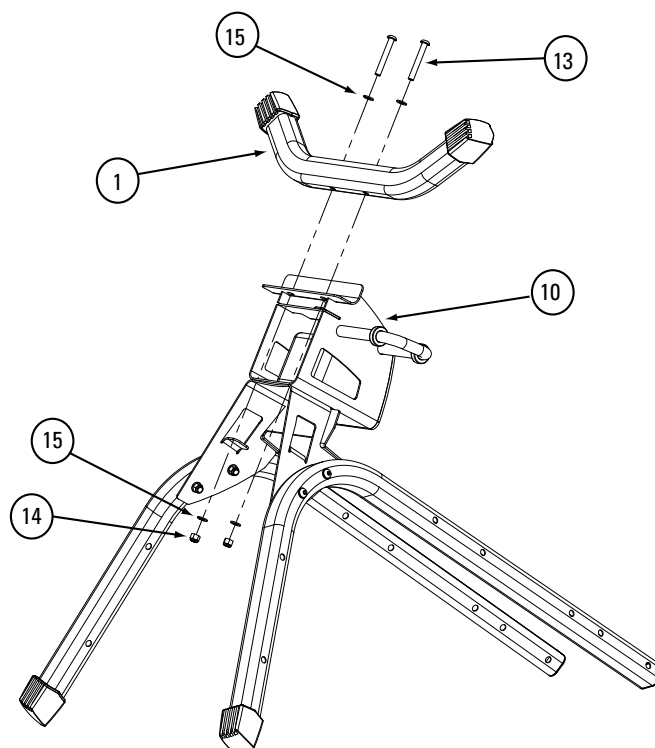


Figure 2

step 3

Parts:

- Base Plate (#11)
- Curl Mount (#6)

Hardware

Qty

- 7/8" Bolts (#12) 2
- Washers (#15) 2

Tools:

- Allen wrench (7/32")

- 3-1** Attach the Preacher Curl Mount (#6) to the Base Plate (#11) using the hardware as shown in **Figure 3**. The Curl Mount should lean toward the U-shaped bars on the Base Plate.

Tighten hardware completely.

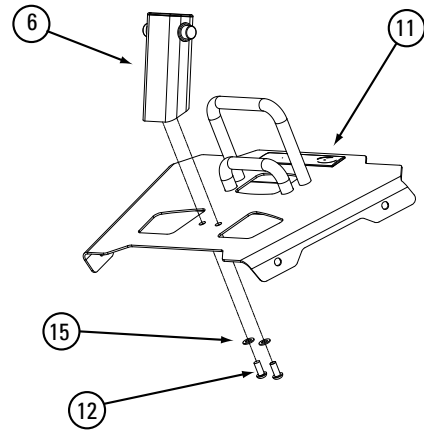


Figure 3

step 4

Parts:

- Base Plate assembly from Step 3
- Base assembly from Step 2

Hardware

Qty

- 2 3/4" Bolts (#13) 4
- Washers (#15) 8
- Nuts (#14) 4

Tools:

- Allen wrench (7/32")
- Wrench/Socket (9/16") or Open End Wrench

- 4-1** Place the Base Plate (#11) on the lower Side Tubes (#9), narrow edge toward the Tube uprights and the curved edges outside the Side Tubes. Align bolt holes in the Base Plate and Side Tubes. Install the hardware in the two bolt holes closer to the uprights. See **Figure 4**.

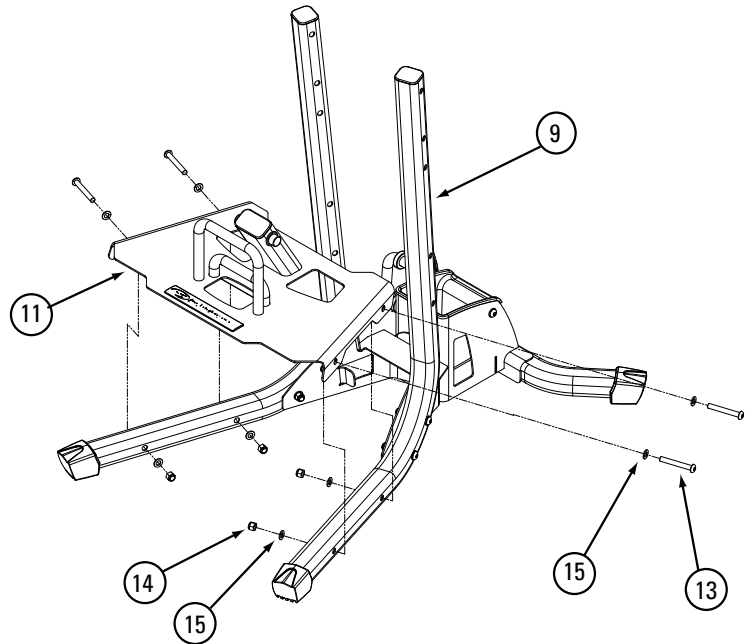


Figure 4

- 4-2** At the bolt holes farther from the Side Tube uprights, insert a 2 3/4" Bolt (#13) through a Washer (#15) into each bolt hole.
- 4-3** Carefully tilt the base assembly forward to rest on the four Side Tube ends. Install a Washer (#19) and Nut (#18) onto each of the Bolts from Step 3-2.

Note: Do not tighten hardware at this time.

- 4-4** Turn the base assembly upright to rest on all four feet.

Parts:

- Rack base assembly from Step 4
- Right Curl Bar Hook (#2)
- Left Curl Bar Hook (#3)
- Bar Hook Brackets (#4)
- Washer Hooks (#7)

Hardware Qty

- 2 3/4" Bolts (#13) 8
- Washers (#15) 14
- Nuts (#14) 8

Tools:

- Allen wrench (7/32")
- Wrench/Socket (9/16") or Open End Wrench

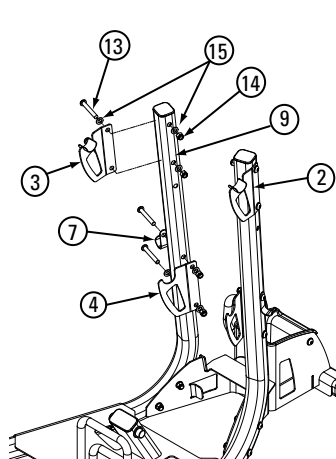
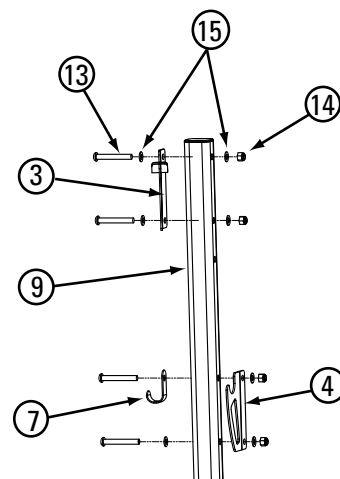


Figure 5



(Left Tube - Front View)

- 5-1** Install the Left Curl Bar Hook (#3) at the two top, outside bolt holes on the left Side Tube (#9) using the hardware shown in **Figure 5**. Make sure that the Curl Bar Hook curves inward, around the Side Tube, and the hook points toward the Base Plate. Tighten hardware completely.
- 5-2** Install the Right Curl Bar Hook (#2) to the right Side Tube as described above.
- 5-3** At the two lowest bolt holes on each Side Tube upright, install a Bar Hook Bracket (#4) and Washer Hook (#7) using the hardware shown in **Figure 5**. Make sure the Bar Hook Brackets are pointing the same direction as the Curl Bar Hooks. Tighten hardware completely.

Note: There is no washer where the Bolt (#13) is inserted through the Washer Hook.

Parts:

- Rack assembly from Step 5
- Towel Rack (#5)
- Washer Hooks (#7)

Hardware Qty

- 2 3/4" Bolts (#13) 2
- Washers (#15) 2
- Nuts (#14) 2

Tools:

- Allen wrench (7/32")
- Wrench/Socket (9/16") or Open End Wrench

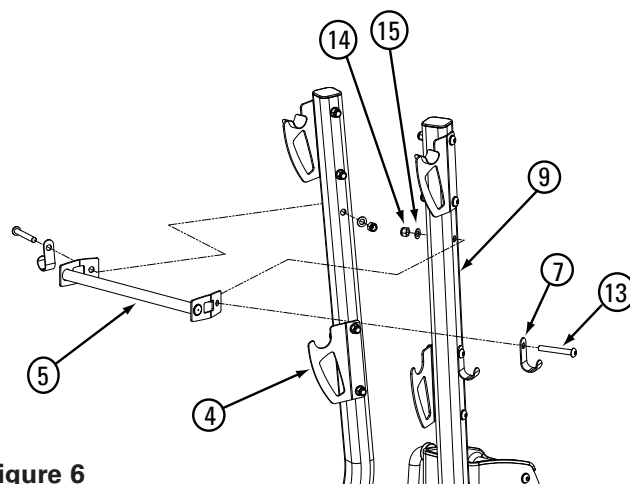


Figure 6

- 6-1** Attach the Towel Rack (#5) and one Washer Hook (#7) to the outside of each Side Tube (#9) above the Bar Hook Brackets (#4) using as the hardware shown in **Figure 6**. Make sure that the Towel Rack rod is toward the Base Plate.

Note: There is no washer where the Bolt (#13) is inserted through the Washer Hook.

- 6-2** Completely tighten all hardware from Steps 1, 2, 4 and 6. (Hint: use the open end wrench to tighten the Nuts from Step 2 and 4-3.) Make sure the rack sits evenly on all four feet. You may need to loosen and retighten the hardware to adjust the unit.

step 7

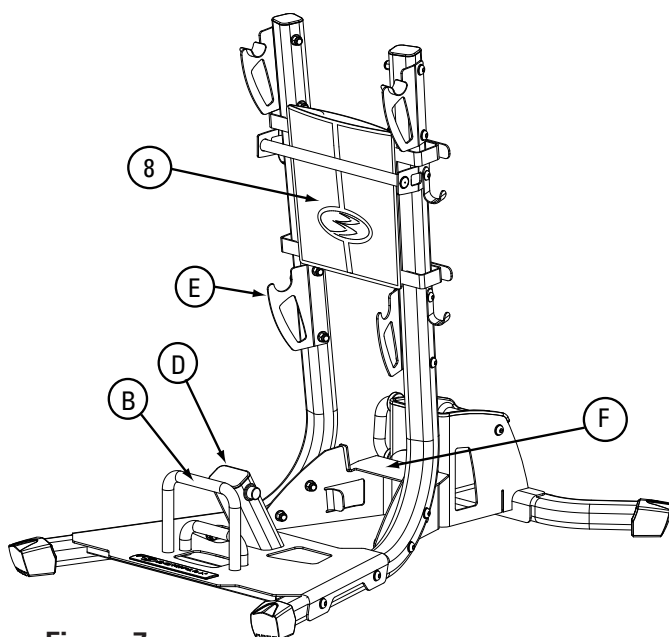
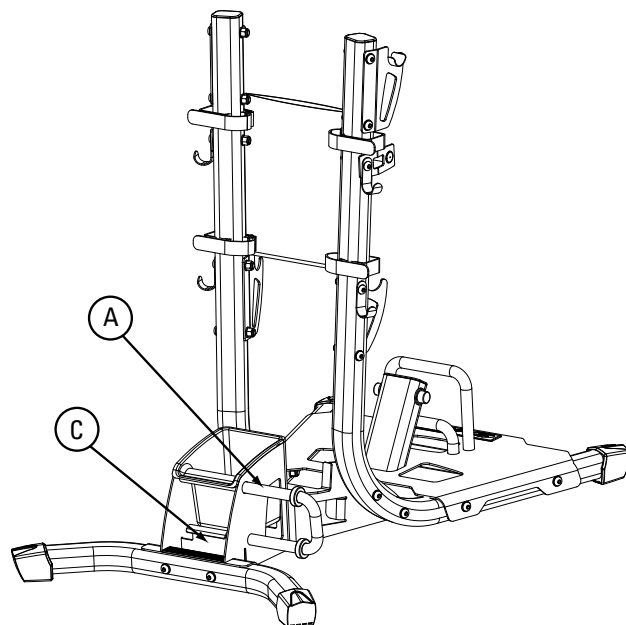


Figure 7



Parts:

- Rack assembly from Step 6
- Flex Bag (#8)
- Color-coded Dots (6 pairs)

- 7-1** Fasten the Flex Bag (#8) to the Side Tube uprights below the Curl Bars, using the hook-and-loop straps. See **Figure 7**.
- 7-2** The pairs of colored dots will identify the storage locations for the Bowflex Ultimate[®] 2 accessory equipment listed in the guide chart below. As you peel each pair of dots from the paper backing, place one dot on the accessory and the other on its holder on the rack. See **Figure 7**.



CAUTION

To avoid damage to equipment or injury, store Bowflex Ultimate[®] 2 accessories only in their designated holders on the rack.

Location	Accessory
A	Ab Crunch (optional attachment)
B	Leg Extension
C	Leg Extension Seat
D	Preacher Curl Assembly
E	Squat Attachment
F	Tall Seat Back

step 8

Parts:

- Rack assembly from Step 7

Tools:

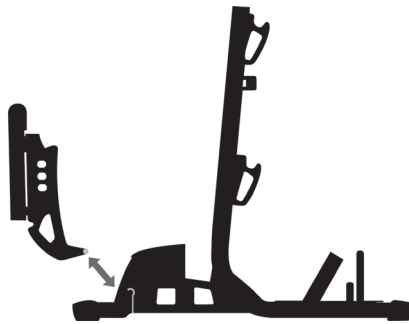
- Allen wrench (7/32")
- Wrench/Socket (9/16") or Open End Wrench

- 8-1** Now that you have assembled your Bowflex Ultimate[®] 2 Accessory Rack, it is very important to tighten all hardware and visually inspect the rack. Make sure that your Bowflex Ultimate[®] 2 Accessory Rack has been assembled correctly and securely.

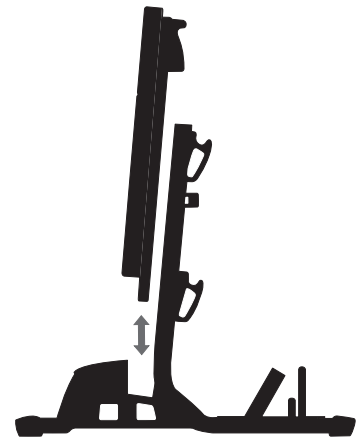
Your Bowflex Ultimate® 2 Accessory Rack is now complete. You are ready to store your equipment.



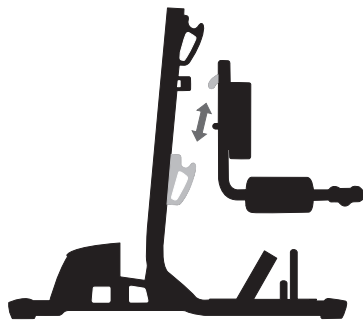
Ab Crunch (optional attachment)



Leg Extension Seat



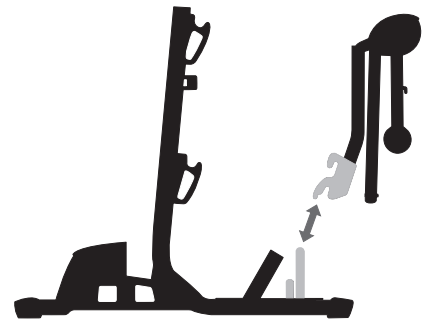
Tall Seat Back



Squat Attachment

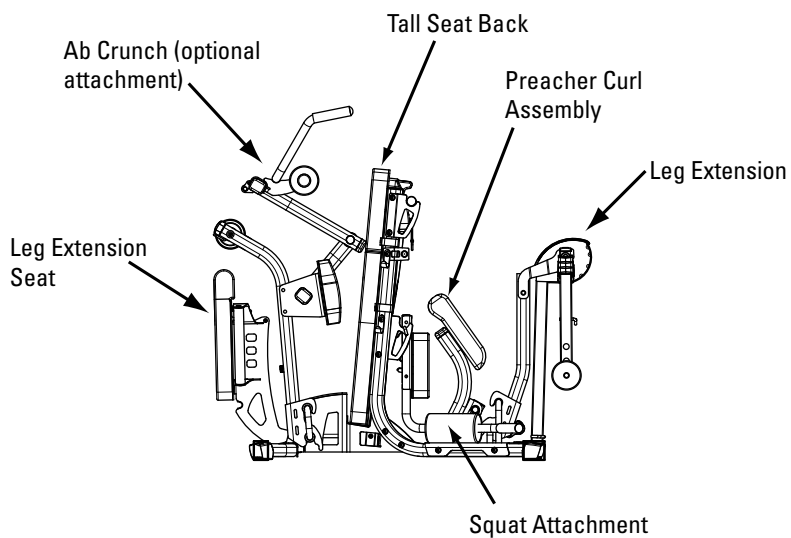


Preacher Curl Assembly

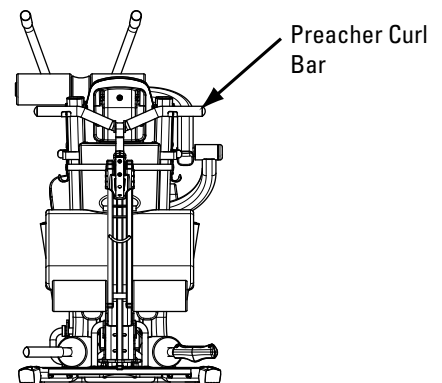


Leg Extension

Loaded Side View



Loaded Front View



WARRANTY

LIMITED WARRANTY FOR EXERCISE PRODUCTS

All Bowflex® branded exercise products manufactured by Nautilus, Inc. are warranted to the retail purchaser to be free from defects in materials and workmanship. Warranty coverage valid to the original purchaser only and proof of purchase will be required. Any product sold or placed in an application not recommended by Nautilus will void any warranty coverage set forth by Bowflex® warranty policies and procedures.

TIME PERIOD

This product was designed, warranted, and intended for residential use only.

Residential Environment:

Frame Parts: 90 days

THIS WARRANTY DOES NOT COVER

1. Use in a commercial setting such as health clubs, schools, hotels and hospitals.
2. Damage due to normal wear and tear.
3. Any damage, failure or loss caused by accident, misuse, neglect, abuse, improper assembly, improper maintenance, Acts of God (such as floods or power surges), or failure to follow instructions or warnings in Owner's Manual.
4. Use of products in an application not recommended by Nautilus, Inc., or in a manner or environment for which they were not designed.
5. Extended warranties: Nautilus will not be responsible for any extended coverage terms offered by a distributor or service provider.

LIMITATIONS

The foregoing warranties are in lieu of and exclude all other warranties not expressly set forth herein, whether express or implied by operation of law or otherwise, including, but not limited to, WARRANTY OF MERCHANTABILITY or WARRANTY OF FITNESS FOR A PARTICULAR PURPOSE. Nautilus, Inc. shall in no event be liable for incidental or consequential losses, damages or expenses in connection with its exercise products. Nautilus liability hereunder is expressly limited to the replacement of goods not complying with this warranty or, at Nautilus, Inc.'s sole election, to the repayment of an amount of the purchase price of the exercise product in question. Some states do not permit the exclusion or limitation of implied warranties or incidental or consequential damages, so the preceding limitations and exclusions may not apply to you.

PROCEDURES

Warranty service will be performed by the original retailer (seller) or an authorized Bowflex® service provider. The original purchaser must provide proof of purchase. Service calls, assembly, transportation, and/or delivery expenses are the responsibility of the purchaser: 1-800-NAUTILUS (628-8458).

1. Nautilus will have the option in its discretion to repair or replace any exercise product(s), which require warranty service, or to apply a limited credit reimbursement toward another Bowflex® exercise product of equal or greater value.
2. Nautilus is not responsible for dealer labor charges for component changeovers completed after the labor-related warranty period(s) stated herein.
3. See an authorized Bowflex® distributor for more information or write to us at:

Nautilus, Inc.

16400 SE Nautilus Dr.

Vancouver, Washington, USA 98683

IMPORTANT CONTACT NUMBERS

If you need assistance, please have both the serial number of your rack and the date of purchase available when you contact the appropriate Nautilus, Inc. office listed below.

WORLDWIDE CUSTOMER SERVICE

• NORTH AMERICA OFFICE

Nautilus, Inc.
World Headquarters
16400 S.E. Nautilus Drive
Vancouver, Washington, USA 98683
Phone: 800-NAUTILUS (628-8458)
Fax: 877-686-6466
e-mail: cstech@nautilus.com

INTERNATIONAL CUSTOMER SERVICE

• SWITZERLAND OFFICE

Nautilus International S.A.
Rue Jean Prouve 6
1762 Givisiez / Switzerland
Tel: +41-26-460-77-77
Fax: +41-26-460-77-70

INTERNATIONAL OFFICES:

• SWITZERLAND OFFICE

Nautilus Switzerland S.A.
Rue Jean Prouve 6
1762 Givisiez / Switzerland
Tel: +41-26-460-77-66
Fax: +41-26-460-77-60
Web: www.nhfg-intl.com

• GERMANY and AUSTRIA OFFICE

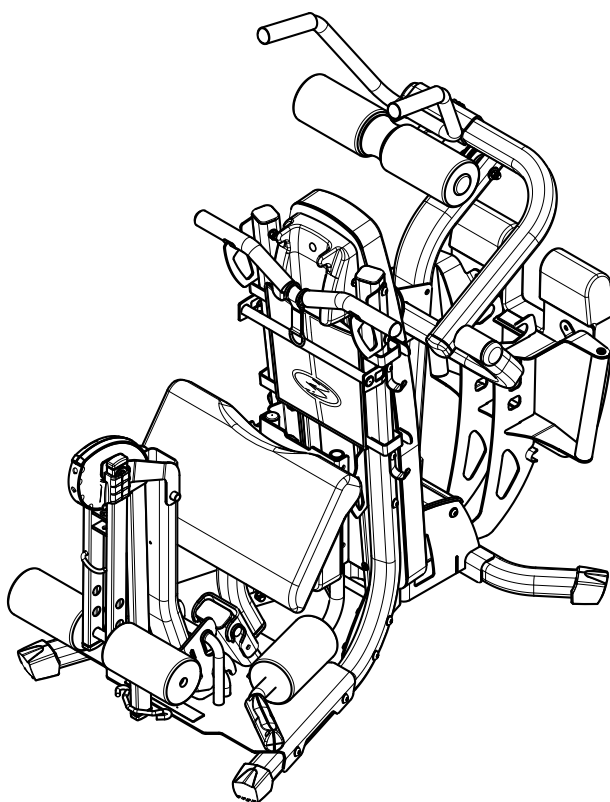
Nautilus GmbH
Tel: 02204-61027
Fax: 02204-62890

• ITALY OFFICE

Nautilus Italy s.r.l.
Tel: 031-51-10-86
Fax: 031-34-24-97

• UNITED KINGDOM OFFICE

Nautilus UK Ltd.
Tel: 01-908-267-345
Fax: 01-908-267-346



BOWFLEX®

16400 SE Nautilus Dr.
Vancouver, Washington, USA 98683
1-800-NAUTILUS (800-628-8458) www.nautilus.com

© 2006 Nautilus, Inc. All Rights Reserved.
Bowflex, the Bowflex logo and Bowflex Ultimate are either registered
trademarks or trademarks of Nautilus, Inc.

Specifications subject to change.

Printed in China