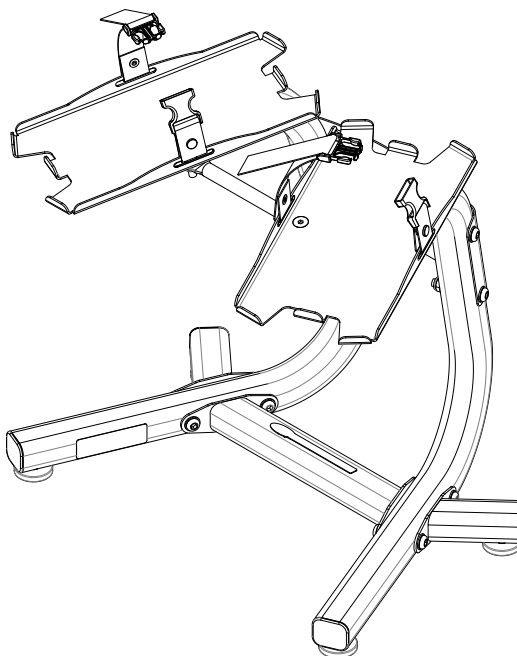




## SelectTech® Stand



### Assembly Manual



# Table of Contents

---

Important Safety Instructions .....3  
    Safety Warning Labels and Serial Number .....4  
  
Specifications.....4  
  
Parts .....5  
  
Hardware.....6  
  
Tools .....6  
  
Assembly Steps.....7  
  
Maintenance.....14  
  
Warranty.....14

**To validate warranty support, keep the original proof of purchase and record the following information:**

**Serial Number** \_\_\_\_\_

**Date of Purchase** \_\_\_\_\_

To register your product warranty, go to: **[www.bowflex.com/register](http://www.bowflex.com/register)**  
or call 1 (800) 605–3369.

If you have questions or problems with your product, please call 1 (800) 605–3369  
Or go to: [www.bowflex.com](http://www.bowflex.com)

# Important Safety Instructions

---



This icon means a potentially hazardous situation which, if not avoided, could result in death or serious injury.

## **Before using this equipment, obey the following warnings:**

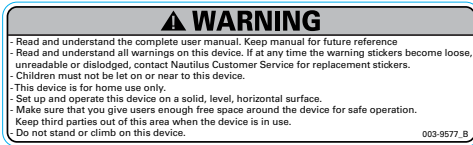
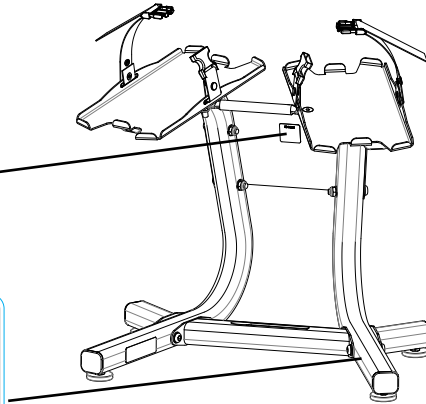


Read and understand all warnings on this equipment.  
Carefully read and understand the Assembly Manual.

- Keep bystanders and children away from the product you are assembling at all times.
- Do not assemble this equipment outdoors or in a wet or moist location.
- Make sure assembly is done in an appropriate work space away from foot traffic and exposure to bystanders.
- Some components of the equipment can be heavy or awkward. Use a second person when doing the assembly steps involving these parts. Do not do steps that involve heavy lifting or awkward movements on your own.
- Set up this equipment on a solid, level, horizontal surface.
- This equipment is for home use only.
- Do not try to change the design or functionality of this equipment. This could compromise the safety of this equipment and will void the warranty.
- If replacement parts are necessary use only genuine replacement parts and hardware supplied by Nautilus. Failure to use genuine replacement parts can cause a risk to users, keep the equipment from operating correctly and void the warranty.
- Do not use until the equipment has been fully assembled and inspected for correct performance in accordance with the Owner's Manual for your SelectTech® dumbbells.
- Read and understand the complete Owner's Manual supplied for your SelectTech® dumbbells before first use. Keep the Owner's and Assembly Manuals for future reference.
- Do all assembly steps in the sequence given. Incorrect assembly can lead to injury.
- Before each use, examine this equipment for loose parts or signs of wear. Contact your local distributor for repair information.

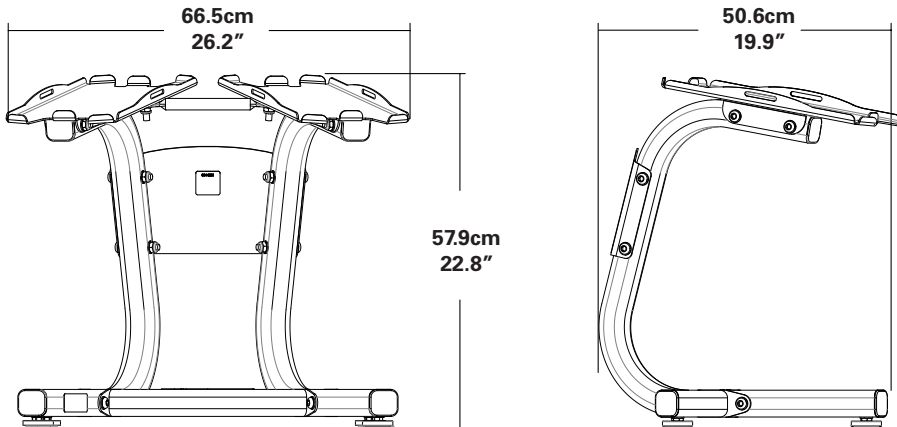
# Safety Warning Labels and Serial Number

Serial number



**Note:** Record serial number in the Serial Number field at the beginning of this manual.

## Specifications

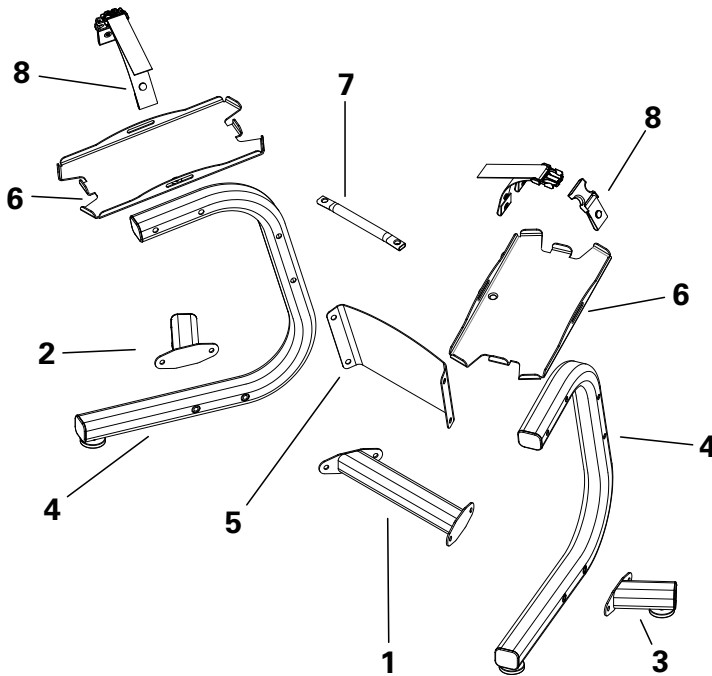


## Regulatory Approvals



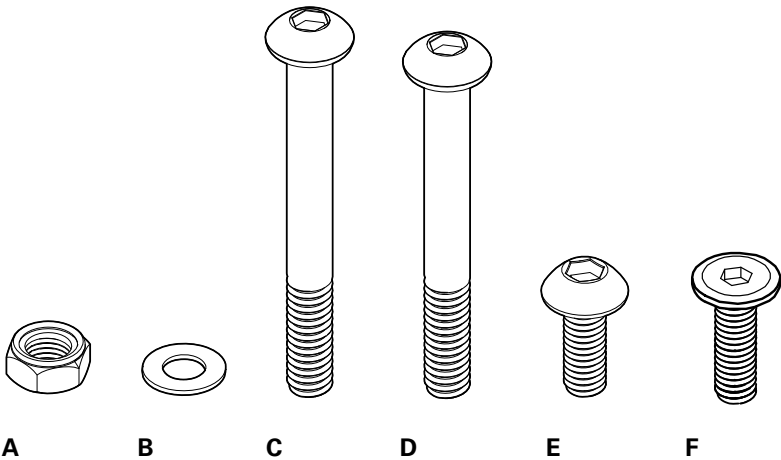
This product, its packaging, and components contain chemicals known to the State of California to cause cancer, birth defects, or reproductive harm. This Notice is provided in accordance with California's Proposition 65. If you would like additional information, please refer to our web site at [www.nautilus.com/prop65](http://www.nautilus.com/prop65).

# Parts



Ref.	Description	Qty
1	Bottom Cross Brace	1
2	Rear Left Stabilizer	1
3	Rear Right Stabilizer	1
4	Stand Leg	2
5	Center Plate	1
6	Dumbbell Platform	2
7	Towel Bar	1
8	Hold Down Straps, 2F 2M	2 Pairs

# Hardware Guide



Ref.	Description	Qty
A	Nut Nylock M10	10
B	Flat Washer M10 Regular	26
C	Button Head Hex Screw M10 X 75	4
D	Button Head Hex Screw M10 X 70	4
E	Button Head Hex Screw M10 X 20	8
F	Flat Head Hex Screw M10 X 30	2

## Tools

### Included



6mm



17mm

### Not Included

Utility knife or scissors to cut nylon ties

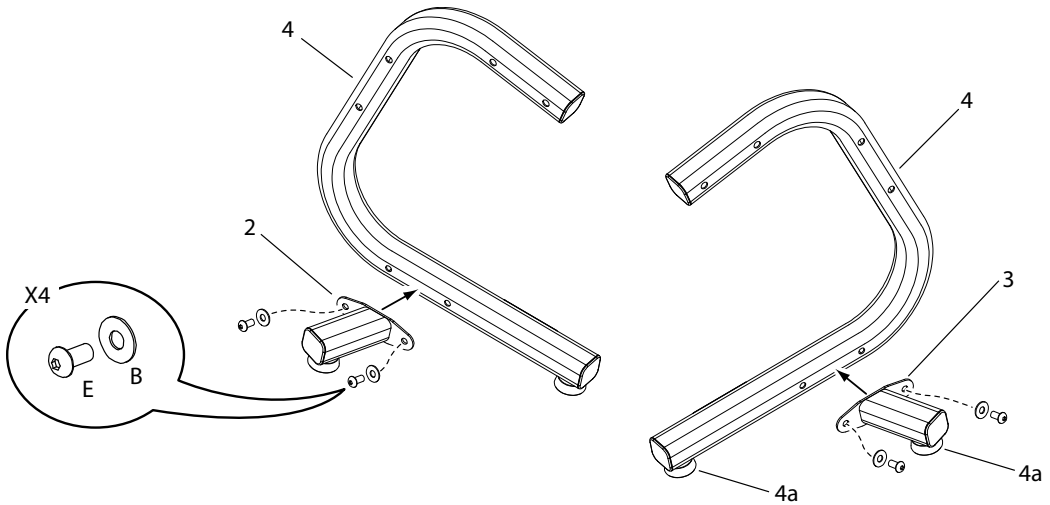
# Assembly Steps

---

## Step 1: Attach Stabilizers to Stand Legs

**Note:** Do not completely tighten the hardware at this time.

If the feet (4a) are not pre-installed, install them on the legs and stabilizers.



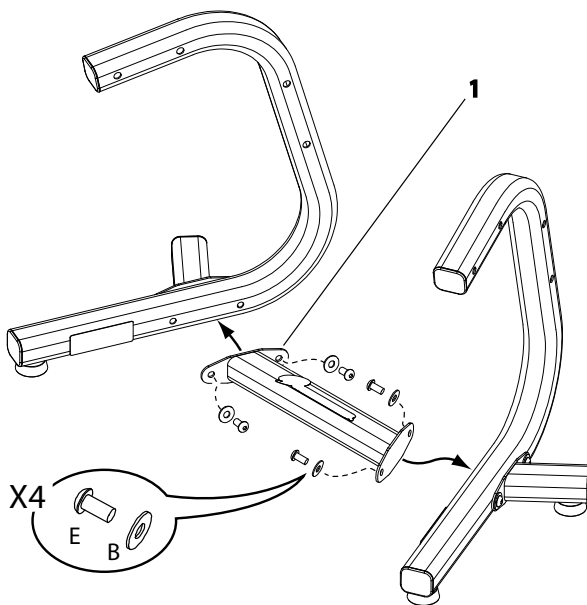
# Assembly Steps

---

## Step 2: Install Bottom Cross Brace

**Note:** Make sure that the narrower edge of the Bottom Cross Brace (1) is closer to the Stand Leg uprights.

Do not completely tighten the hardware at this time.





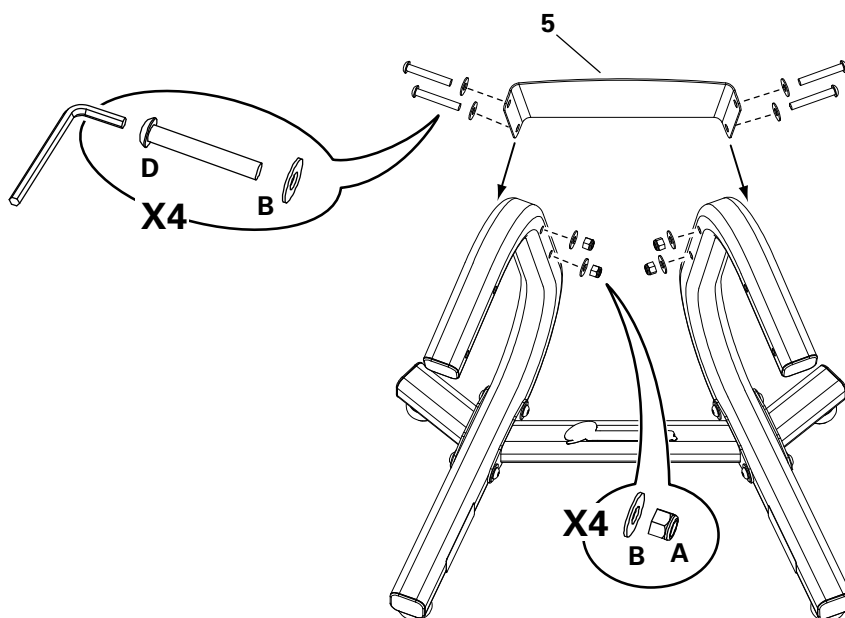
# Assembly Steps

---

## Step 3: Install Center Plate

**Note:** Make sure that the Center Plate edges are on the outer sides of the legs, and that the logo on the Center Plate is right side up.

Tighten all hardware from Steps 1, 2 and 3.

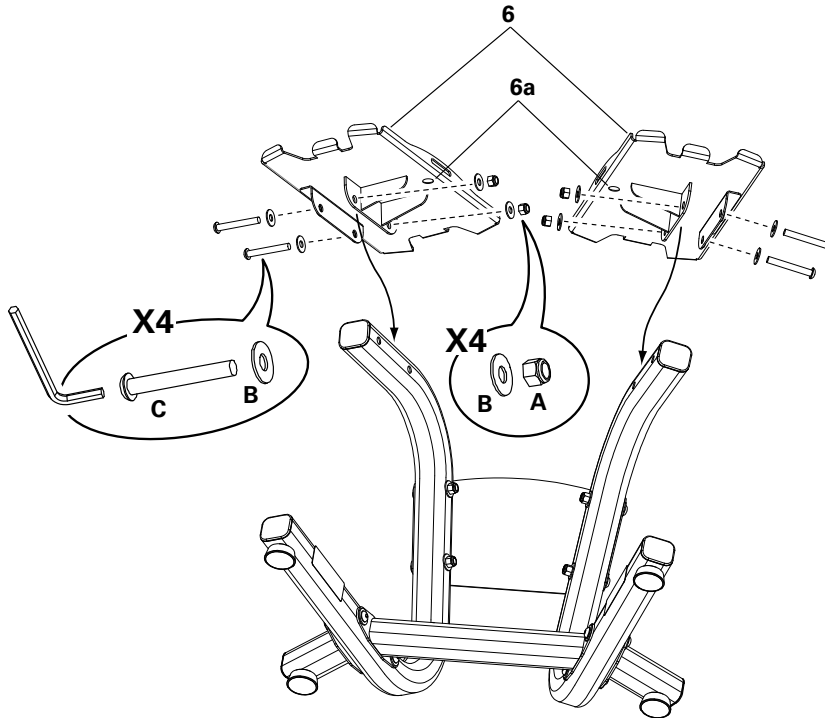


# Assembly Steps

---

## Step 4: Install Dumbbell Platforms

**Note:** Make sure that the screw holes (6a) in the Dumbbell Platforms are toward the center of the stand.

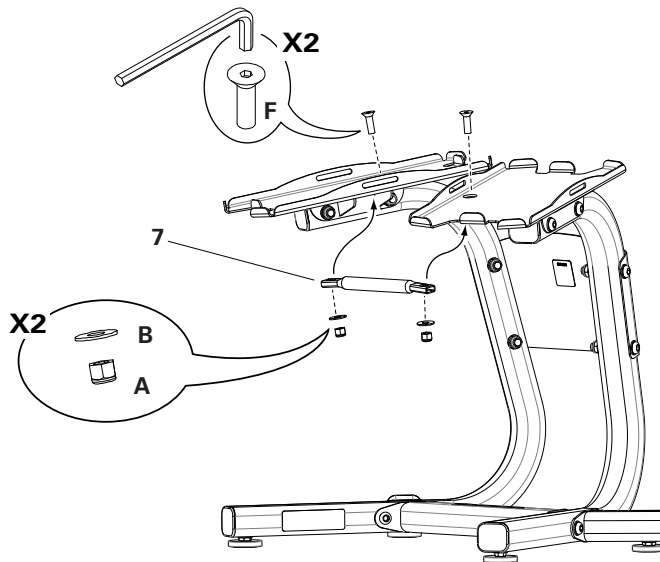


# Assembly Steps

---

## Step 5: Install Towel Bar

**Note:** Tighten all hardware completely.

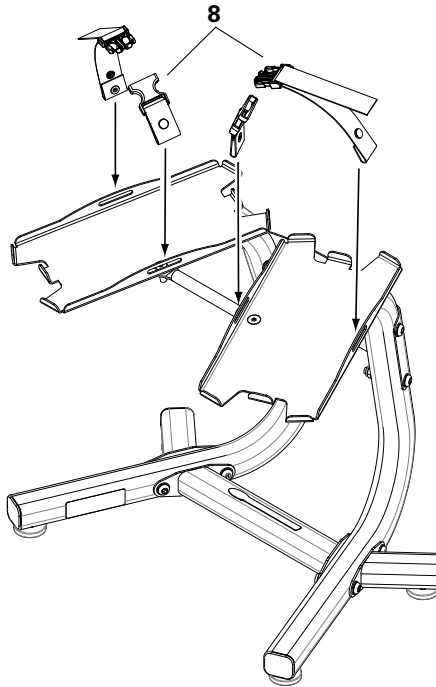


# Assembly Steps

---

## Step 6: Attach Hold Down Straps to Dumbbell Platforms

**Note:** Make sure that the snaps are securely fastened.




# Assembly Steps

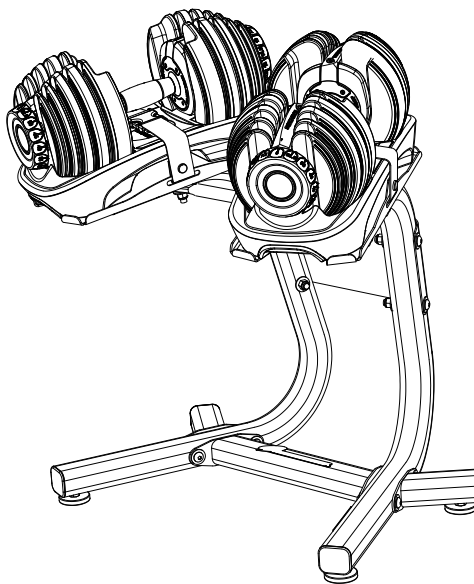
---

## Step 7: Final Inspection

Inspect your equipment to ensure that all fasteners are tight, the equipment is level, and components are properly assembled. If necessary, adjust the feet until they all contact the floor.

 Do not use the equipment until the equipment has been fully assembled and inspected for correct performance in accordance with the Owner's Manual.

Use the Hold Down Straps to attach each dumbbell base to the Dumbbell Platforms. Make sure that the straps are safely connected across the dumbbell base to prevent unwanted movement.



**Note:** Record serial number in the Serial Number field at the beginning of this manual.

# Maintenance

---



Equipment must be regularly examined for damage and repairs. The owner is responsible to make sure that regular maintenance is done. Worn or damaged components must be replaced immediately or the equipment removed from service until the repair is made. Only manufacturer supplied components can be used to maintain and repair the equipment.

---

<b>Daily/Before Each Use:</b>	Examine equipment. Make sure it looks in good condition and operates smoothly. If you find damage, DO NOT USE.
-------------------------------	----------------------------------------------------------------------------------------------------------------

---

<b>Daily/After Each Use:</b>	Clean equipment with a clean, dry cloth. Do not use cleansers containing enzymes.
------------------------------	-----------------------------------------------------------------------------------

---

<b>Weekly:</b>	Clean equipment fully with a clean cloth lightly dampened with warm water and a small amount of mild soap. Wipe dry with a separate cloth. Touch up any scratches with touch-up paint to prevent rust, if necessary.
----------------	----------------------------------------------------------------------------------------------------------------------------------------------------------------------------------------------------------------------

---

<b>Monthly:</b>	Examine the frame for signs of cracking or permanent bending. Do not use the equipment if you see this. Contact your local distributor immediately.
-----------------	-----------------------------------------------------------------------------------------------------------------------------------------------------

---

If you have any questions on the correct use or maintenance of this equipment, call Nautilus® Customer Service in the Contacts section at the beginning of this manual.

## Warranty

### Who Is Covered

This warranty is valid only to the original purchaser and is not transferable or applicable to any other person(s).

### What Is Covered

Nautilus, Inc. warrants that this product is free from defects in materials and workmanship, when used for the purpose intended, under normal conditions, and provided it receives proper care and maintenance as described in the Product's Assembly and Owner's manual. This warranty is good only for authentic, original, legitimate machines manufactured by Nautilus, Inc. and sold through an authorized agent and used in the United States or Canada.

### Terms

- Frame 10 years
- Parts 1 year

### How Nautilus Will Support the Warranty

Throughout and as set forth under the terms of the Warranty, Nautilus, Inc. will provide a replacement for any component or part that proves to be defective in materials or workmanship. Nautilus, Inc. reserves the right to substitute material of equal or better quality if identical materials are not available under this warranty.

# Warranty

---

In the event that replacement parts or components do not correct the issue, Nautilus, Inc. reserves the right to replace the product or apply a limited credit reimbursement toward another Nautilus Inc. brand product, at our discretion. Reasonable substitution may be required depending upon Product availability. Any replacement of the Product under the terms of the Warranty in no way extends the original Warranty period. THESE REMEDIES ARE THE EXCLUSIVE AND SOLE REMEDIES FOR ANY BREACH OF WARRANTY.

## What You Must Do

- Retain appropriate and acceptable Proof of Purchase.
- Operate, maintain, and inspect the Product as specified in the Product Documentation (Manuals, (Assembly, Owner's Manuals, etc.).
- Product must be used exclusively for the purpose intended.
- Notify Nautilus within 30 days after detecting an issue with the Product.
- Install replacement parts or components in accordance with any Nautilus instructions.
- Perform diagnostic procedures with a trained Nautilus, Inc representative if requested.
- This warranty does not cover labor costs or related charges.

## What Is Not Covered

- Damage due to abuse, tampering or modification of the Product, failure to properly follow assembly instructions, maintenance instructions, or safety warnings as stated in the Product Documentation (Assembly, Owner's Manuals, etc), damage due to improper storage or the effect of environmental conditions such as moisture or weather, misuse, mishandling, accident, natural disasters, power surges.
- A machine placed or used in a commercial or institutional setting. This includes gyms, corporations, work places, clubs, fitness centers and any public or privately entity that has a machine for use by its members, customers, employees or affiliates.
- Damage caused by exceeding maximum user weights as defined in the Product's Owner's manual or warning label.
- Damage due to normal usage and wear and tear.
- This warranty does not extend to any territories or countries outside the United States and Canada.

## How to Obtain Service

For Products purchased directly from Nautilus, Inc. contact the Nautilus office listed on the Contacts page of the products Owner's manual. You may be required to return the defective component to a specified address for repair or inspection, at your expense. Standard ground shipping of any warranty replacement parts will be paid by Nautilus, Inc. For products purchased from a retailer, you may be asked to contact your retailer for warranty support.

## Exclusions

The preceding warranties are the sole and exclusive express warranties made by Nautilus, Inc. They supersede any prior, contrary or additional representations, whether oral or written. No agent, representative, dealer, person or employee has the authority to alter or increase the obligations or limitations of this warranty. Any implied warranties, including the WARRANTY OF MERCHANTABILITY and any WARRANTY OF FITNESS FOR A PARTICULAR PURPOSE, are limited in duration to the term of the applicable express warranty provided above, whichever is longer. Some states do not allow limitations on how long an implied warranty lasts, so the above limitation may not apply to you.

## Limitation of Remedies

EXCEPT AS OTHERWISE REQUIRED BY APPLICABLE LAW, THE PURCHASER'S EXCLUSIVE REMEDY IS LIMITED TO REPAIR OR REPLACEMENT OF ANY COMPONENT DEEMED BY NAUTILUS, INC. TO BE DEFECTIVE UNDER THE TERMS AND CONDITIONS STATED HEREIN. IN NO EVENT WILL NAUTILUS, INC. BE LIABLE FOR ANY SPECIAL, CONSEQUENTIAL, INCIDENTAL, INDIRECT OR ECONOMIC DAMAGES, REGARDLESS OF THE THEORY OF LIABILITY (INCLUDING, WITHOUT LIMITATION, PRODUCT LIABILITY, NEGLIGENCE OR OTHER TORT) OR FOR ANY LOST REVENUE, PROFIT, DATA, PRIVACY OR FOR ANY PUNITIVE DAMAGES ARISING OUT OF OR RELATED TO THE USE OF THE FITNESS MACHINE EVEN IF NAUTILUS, INC. HAS BEEN ADVISED OF THE POSSIBILITY OF SUCH DAMAGES. THIS EXCLUSION AND LIMITATION SHALL APPLY EVEN IF ANY REMEDY FAILS OF ITS ESSENTIAL PURPOSE. SOME STATES DO NOT ALLOW THE EXCLUSION OR LIMITATION OF CONSEQUENTIAL OR INCIDENTAL TYPE DAMAGES SO THE ABOVE LIMITATION MAY NOT APPLY TO YOU.

## State Laws

This warranty gives you specific legal rights. You may also have other rights, which vary from state to state.

## Expirations

If the warranty has expired, Nautilus, Inc. may assist with replacements or repairs to parts and labor, but there will be a charge for these services. Contact a Nautilus® office for information on post-warranty parts and services. Nautilus does not guarantee availability of spare parts after expiration of warranty period.

## International Purchases

If you purchased your machine outside of the United States consult your local distributor or dealer for warranty coverage.



Nautilus®

Bowflex®

Schwinn® Fitness

Universal®